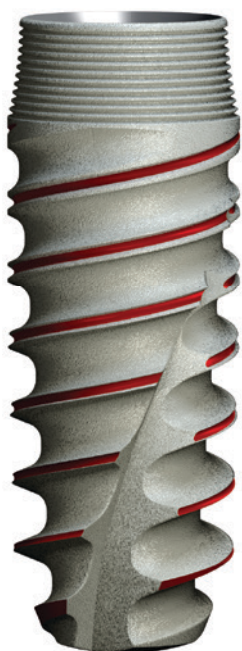


 DITRON
DENTAL
PRODUCT CATALOG



#Precisely



Ditron Dental is a biomedical company devoted to the research, development and production of high end components for implant-based dental restorations.

Ditron Dental was founded on the basis of over 50 years of experience in the design, production and JIT (Just-in-Time) delivery of ultra precise mission critical parts for some of the most demanding applications. Outstanding precision and exceptional quality are an essential part of our corporate D.N.A.

We focus on providing you with high end implantology solutions which are intuitively simple, safe and reliable, combined with around the clock service and support.

Our in-house team of leading clinicians, micromachining experts and quality process engineers enables us to provide you with a state-of-the-art, reliable and dependable implant system.

All our products are predesigned to surpass the most stringent quality requirements. The Ditron Dental components are manufactured in our state of the art production facility where each and every step is controlled to ensure product safety and reliability.

We hope you find this catalog informative and useful.



Product Guarantee

Ditron Dental guarantees all its products for a period of 15 years when used in accordance with the supplied Instructions for Use (IFU) and the company's protocols.



All Ditrón Dental implants feature a blasted and thermally acid-etched endosseous surface. The micro and macro structure achieved by this process facilitates an accelerated osseointegration of all Ditrón Dental implant lines.

To ensure repeatability, each and every implant is individually blasted with abrasive particles in an automated system which controls the speed, direction, pressure and size of the particles that collide with the implant. This ensures that each and every implant will undergo the same process and demonstrate the same excellent surface characteristics.

The excellent implant surface morphology is then created by a controlled thermal-acid-etching process. Finally, a high purity cleaning procedure is introduced to ensure that no foreign particles remain on the implant's surface. The cleanliness level and purity of our implants are routinely checked by XPS measurements (see tables 1-2).



Histology of the Ditrón's implant newly formed bone mainly colonized the pores in the vicinity of pre-existing cortical bone. New bone tissue could be observed.

Atomic force microscopy (AFM) surface topography clearly demonstrate the improved Bone to Implant Contact (BIC) and the improved mechanical anchorage.

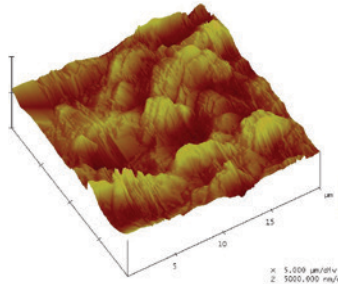


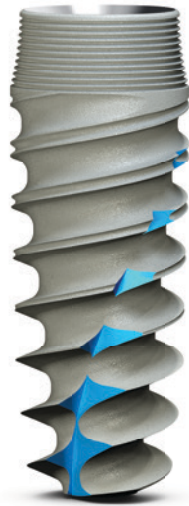
Table 1 XPS element composition, Atomic %

Methodology	Lot	Point	N	C	O	V	Ti	Al
The elemental composition and atomic concentrations of the surface treatment were calculated using elemental sensitivity factors without applying any standardization procedure.	MPI lot 531	1 down	1.4	26.7	51.33	0.4	16.8	2.4
		2 up	0	28.3	51.6	1.1	16.2	2.9

Table 2 Ti Oxide thickness (nm) – lot 531

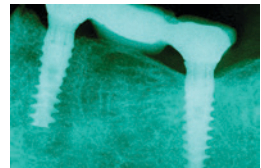
Methodology	Point	1 down 500µm	3 down 500µm
		PE150eV	PE150eV
The thickness of the Titanium Oxide layer was calculated from the high resolution energy spectra of Ti2p electrons.	D, nm	6.7	6.8

ULT™ ultimate precision implant



Bone Platform Switching

- Reverse Conical Neck (RCN) increases the implant contact surface area with the bone and preserves a greater proportion of bone and periosteum.
- The taper and concavity of the collar guarantees a gentle contact and reduced stress on the crestal cortical bone preventing undesired vascular compression.
- The Reverse Conical Neck provides greater implant stability and better distribution of the stress to bone implant interface.



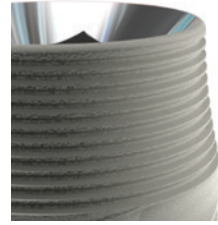
Helical Apico-coronal Slots

- Makes the implant self tapping and reduces resistance to bone insertion.
- Allows the recovery of medullary bone fragments mixed with growth factors' enriched blood.



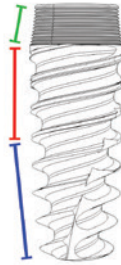
Micro Thread

- Placing micro-threads on the implant neck greatly increases the ability of an implant to resist axial loads, and the mechanical stimulus provided by the micro-threads helps to preserve the peri-implant marginal bone.
- The Ultimate™ micro-threads exercise appropriate biomechanical stimulation of cortical bone, stimulate the tropism and enhance the speed and quality of osseointegration.



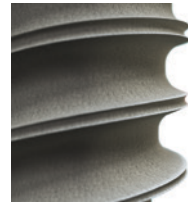
Implant Profile

- The truncated-cone profile reproduces root-form morphology of the tooth root and offers significant advantages in many critical situations.
- Platform Switching - The prosthetic connection leaves constant horizontal progressive space for the biological width, limits bone resorption, stabilizes the soft tissue and ensures excellent papillary aesthetics.
- Al2O3 surface blasting and high purity double acid etching cleaning procedures attain superior SEM and XPS results.



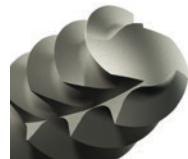
Progressive Thread

- The thread with the concave profile has an apical-coronal incremental thickness DSST (Double Stressless Sharp Thread) which together with a descending concave profile between the threads, generates a gentle and progressive vertical and horizontal bone compaction.



Cutting Apex Edge

- Provides self drilling and self tapping capacity to the implant allowing optimizing implant insertion angle.

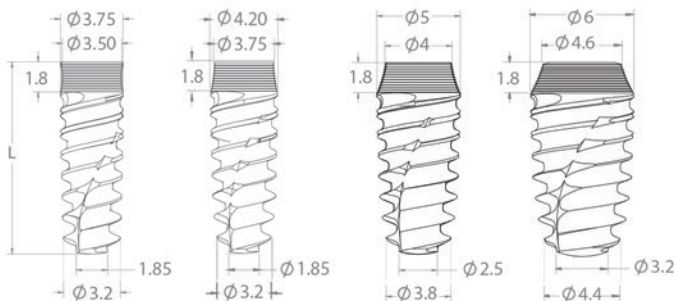


ULT™ matrix



Catalog numbers

Length	7mm	8mm	10mm	11.5mm	13mm	16mm
● Ø 3.75 mm	ult07375	ult08375	ult10375	ult11375	ult13375	ult16375
● Ø 4.2 mm	ult07420	ult08420	ult10420	ult11420	ult13420	ult16420
● Ø 5.0 mm	ult07500	ult08500	ult10500	ult11500	ult13500	ult16500
○ Ø 6.0 mm	ult07600	ult08600	ult10600	ult11600	ult13600	

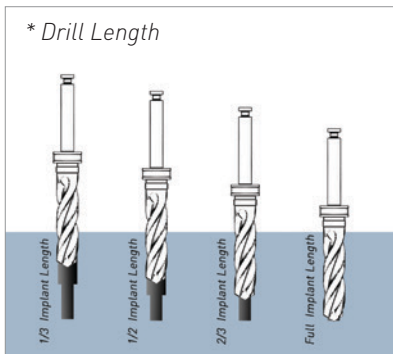


For the Ditrón MPI™ Implant please use SmartPeg type 49 – calibrated for Osstell IDx and Osstell ISQ measurement instruments.

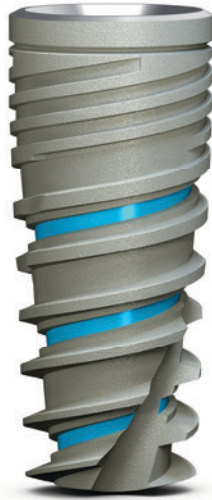
Drill sequence

	drill			drill		
	Bone type	length*	RPM	Bone type	length*	RPM
● Ø 3.75 mm	I,II			III,IV		
	Ø1.9 mm	Full	1200-1500	Ø1.9 mm	Full	1200-1500
	Ø2.0 mm	Full	900-1200	Ø2.0 mm	Full	900-1200
	Ø2.8 mm	2/3	500- 700	Ø2.8 mm	1/2	500- 700
	Ø3.2 mm	1/3	200- 400			
● Ø 4.2 mm	Ø1.9 mm	Full	1200-1500	Ø1.9 mm	Full	1200-1500
	Ø2.0 mm	Full	900-1200	Ø2.0 mm	Full	900-1200
	Ø2.8 mm	Full	500- 700	Ø2.8 mm	1/2	500- 700
	Ø3.2 mm	2/3	400- 700	Ø3.2 mm	1/3	400- 700
	Ø3.8 mm	1/3	200- 400			
● Ø 5.0 mm	Ø1.9 mm	Full	1200-1500	Ø1.9 mm	Full	1200-1500
	Ø2.0 mm	Full	900-1200	Ø2.0 mm	Full	900-1200
	Ø2.8 mm	Full	500- 700	Ø2.8 mm	Full	500- 700
	Ø3.2 mm	Full	400- 700	Ø3.2 mm	1/2	400- 700
	Ø3.8 mm	2/3	400- 600	Ø3.8 mm	1/3	400- 600
	Ø4.5 mm	1/3	200- 400			
○ Ø 6.0 mm	Ø1.9 mm	Full	1200-1500	Ø1.9 mm	Full	1200-1500
	Ø2.0 mm	Full	900-1200	Ø2.0 mm	Full	900-1200
	Ø2.8 mm	Full	500- 700	Ø2.8 mm	Full	500- 700
	Ø3.2 mm	Full	400- 700	Ø3.2 mm	Full	400- 700
	Ø3.8 mm	Full	400- 600	Ø3.8 mm	Full	400- 600
	Ø4.5 mm	Full	400- 600	Ø4.5 mm	1/2	400- 600
	Ø5.0 mm	1/2	300- 500	Ø5.0 mm	1/3	300- 500
	Ø5.5 mm	1/3	200- 400			

Do not exceed 60Ncm during implant insertion.

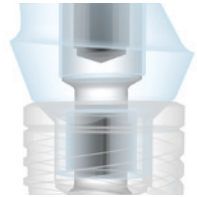


MPI™ molecular precision implant



MolecuLock™

- Seal between implant and abutment.
- Biomechanical design and 1 micron level production to reduce micro gaps and micro movement risks.



Restorative platform

- Subcrestal placement including a beveled collar shifting the implant-abutment junction inward, in order to achieve platform-switching configuration.
- Platform switching generates a perfect environment for the soft-tissue growth and helps prevent bone resorption.



Surface treatment

- Surface blasting and double acid etching.
- High purity cleaning procedures.
- Superior EDS and XPS results.



Assisted osseointegration

- Our unique Spherical Helix Chamber forms a localized infrastructure that serves as a scaffold for promoting wound healing and bone formation from existing osteoblasts.



Apex design

- Apex with self-tapping drilling blades enables smaller osteotomy.
- The self-tapping function also supports a precise adaptation of the implant thread to the bone, thus providing optimal primary stability.



Wide rounded apex

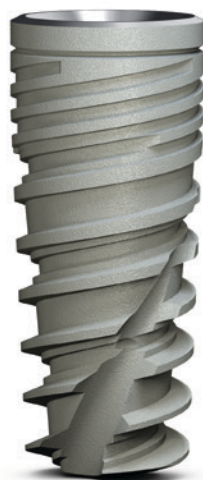
- Improved ease of insertion and allowing mild direction refinement during the initial stages of insertion.

Implant body

- High initial stability even in compromised bone situations.
- Expanding tapered implant body with double-thread self-tapping design condenses bone gradually to enhance primary stability.
- The insertion rate of the Molecular Precision™ implants are 2.2mm per revolution.



MPI™ matrix

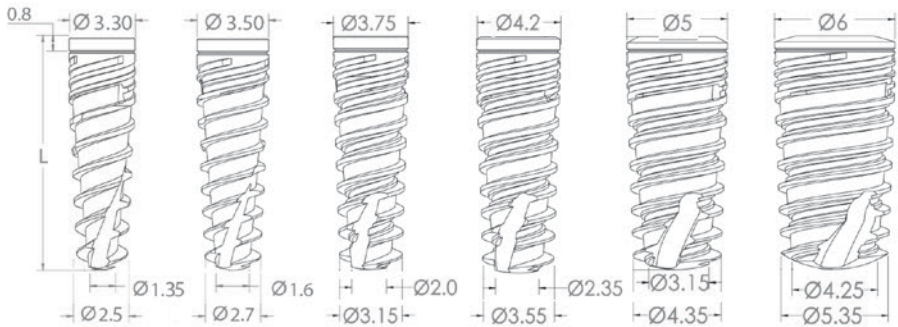


Catalog numbers

Length	6mm	8mm	10mm	11.5mm	13mm	16mm
● Ø 3.30 mm		mpi08330	mpi10330	mpi11330	mpi13330	mpi16330
● Ø 3.50 mm		mpi08350	mpi10350	mpi11350	mpi13350	mpi16350
● Ø 3.75 mm		mpi08375	mpi10375	mpi11375	mpi13375	mpi16375
● Ø 4.20 mm	mpi06420	mpi08420	mpi10420	mpi11420	mpi13420	mpi16420
● Ø 5.00 mm	mpi06500	mpi08500	mpi10500	mpi11500	mpi13500	mpi16500
○ Ø 6.00 mm	mpi06600	mpi08600	mpi10600	mpi11600	mpi13600	



For the Ditrion MPI™ Implant please use SmartPeg type 49 – calibrated for Osstell IDx and Osstell ISQ measurement instruments.



Drill sequence

	Bone type I,II		Bone type III,IV	
		RPM		RPM
● mpi Ø 3.30 mm	Ø 1.9 mm Ø 2.0 mm Ø 2.8 mm	1200-1500 500- 700 200- 400	Ø 1.9 mm Ø 2.0 mm	1200-1500 500- 700
● mpi Ø 3.50 mm	Ø 1.9 mm Ø 2.0 mm Ø 2.8 mm Ø 3.2 mm	1200-1500 900-1200 500- 700 200- 400	Ø 1.9 mm Ø 2.0 mm Ø 2.8 mm	1200-1500 900-1200 500- 700
● mpi Ø 3.75 mm	Ø 1.9 mm Ø 2.0 mm Ø 2.8 mm Ø 3.2 mm	1200-1500 900-1200 500- 700 200- 400	Ø 1.9 mm Ø 2.0 mm Ø 2.8 mm	1200-1500 900-1200 500- 700
● mpi Ø 4.2 mm	Ø 1.9 mm Ø 2.0 mm Ø 2.8 mm Ø 3.2 mm Ø 3.8 mm	1200-1500 900-1200 500- 700 400- 700 200- 400	Ø 1.9 mm Ø 2.0 mm Ø 2.8 mm Ø 3.2 mm	1200-1500 900-1200 500- 700 400- 700
● mpi Ø 5.0 mm	Ø 1.9 mm Ø 2.0 mm Ø 2.8 mm Ø 3.2 mm Ø 3.8 mm Ø 4.5 mm	1200-1500 900-1200 500- 700 400- 700 400- 600 200- 400	Ø 1.9 mm Ø 2.0 mm Ø 2.8 mm Ø 3.2 mm Ø 3.8 mm	1200-1500 900-1200 500- 700 400- 700 400- 600
○ mpi Ø 6.0 mm	Ø 1.9 mm Ø 2.0 mm Ø 2.8 mm Ø 3.2 mm Ø 3.8 mm Ø 4.5 mm Ø 5.0 mm Ø 5.5 mm	1200-1500 900-1200 500- 700 400- 700 400- 600 400- 600 300- 500 200- 400	Ø 1.9 mm Ø 2.0 mm Ø 2.8 mm Ø 3.2 mm Ø 3.8 mm Ø 4.5 mm Ø 5.0 mm	1200-1500 900-1200 500- 700 400- 700 400- 600 400- 600 300- 500

Do not exceed 60Ncm during implant insertion.

OPI™ one-piece implant

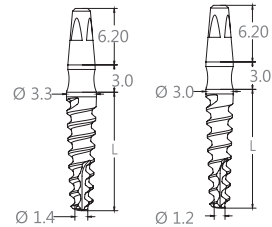


Catalog numbers

Length	10mm	11.5mm	13mm	16mm
● Ø 3.0 mm	opi1030	opi1130	opi1330	opi1630
● Ø 3.3 mm	opi1033	opi1133	opi1333	opi1633



TSQK-200340
opi short hand & ratchet key
external square connection
length: 21mm



Drill sequence

	Bone type		Bone type	
	I,II	RPM	III,IV	RPM
● Ø 3.0 mm	Ø 1.9 mm	1200-1500	Ø 1.9 mm	1200-1500
	Ø 2.0 mm	900-1200	Ø 2.0 mm	900-1200
	Ø 2.5 mm	700- 900		
● Ø 3.3 mm	Ø 1.9 mm	1200-1500	Ø 1.9 mm	1200-1500
	Ø 2.0 mm	900-1200	Ø 2.0 mm	900-1200
	Ø 2.5 mm	700- 900	Ø 2.5 mm	700- 900
	Ø 2.8 mm	400- 700		

Do not exceed 60Ncm during implant insertion.

PROSTHETICS



Comprehensive restorative solutions

Ditron Dental's internal hex prosthetics portfolio provides solutions for all indications. From single unit restoration to full arch restoration, one or two stage, immediate or delayed loading procedures you will find an implant/prosthetic combination that addresses the clinical situation and meets the best needs of the patient.

Compatibility

Abutments and components fit all standard hexagonal locking systems. Nevertheless, we highly recommend using Ditron Dental's prosthetic parts to ensure the perfect connection between implant & abutment (MolecuLock™).

Quality

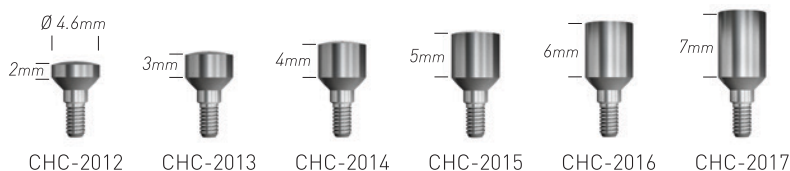
Precision turning and milling ensures that all abutments are delivered with the highest quality and precision. All abutments are delivered with an abutment screw.

Strength

All Ditron's abutments are manufactured from biocompatible medical Grade 23 Titanium alloy that has been tested for strength and durability.

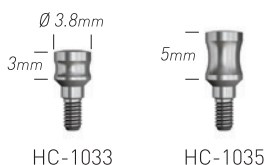
Standard healing cap

Standard \varnothing 4.6 mm

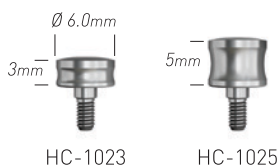


Anatomic healing cap

Narrow \varnothing 3.8 mm



Wide \varnothing 6.0 mm

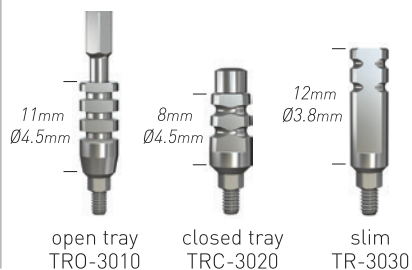


Anatomic \varnothing 4.6 mm



Impression coping

Transfer



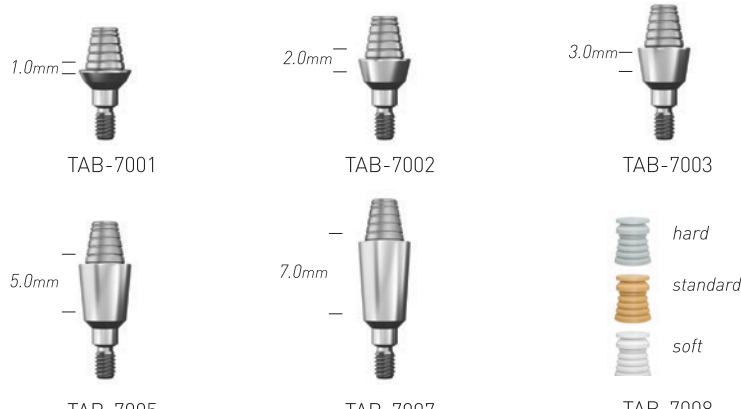
Analog



Transfer TR-3030 includes a 16mm screw (TRS-3050). Long Screw 24mm (TRS-3040) for open tray is sold separately.

Temporary abutments

Abutments



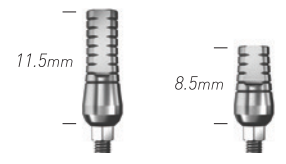
TAB-7001 TAB-7002 TAB-7003

TAB-7005 TAB-7007 TAB-7008
Plastic sleeve set

hard
standard
soft

Straight abutments


Standard Ø 4.5 mm



11.5mm 8.5mm

ABT-6010 ABT-6020


Narrow Ø 3.8 mm



8.5mm 8.5mm 6.0mm

ABT-6033 slim ABT-6030 ABT-6040

Anatomic Ø 5.6 mm



1.0mm 2.0mm 3.0mm 4.0mm

ABT-6050-1 ABT-6050-2 ABT-6050-3 ABT-6050-4

All abutments include a short abutment screw (ABTS-2000).
Abutment screw should be tightened to 30 Ncm.

Angulated abutments 15° & 25°

all shoulder diameters = Ø4.8mm

Standard 15°



ABT-4015
8.5 mm 15°



ABT-4015-1
11.5 mm 15°



ABT-4015-1B
11.5 mm 15°
30° offset

Standard 25°



ABT-4025
8.5 mm 25°



ABT-4025-1
11.5 mm 25°



ABT-4025-1B
11.5 mm 25°
30° offset

Anatomic angulated abutments 15° & 25°

all shoulder diameters = Ø4.7mm

Anatomic 15°



ABT-5015-1
15°
Shoulder 1mm



ABT-5015-3
15°
Shoulder 3mm

Anatomic 25°



ABT-5025-1
25°
Shoulder 1mm



ABT-5025-3
25°
Shoulder 3mm

All abutments include a short abutment screw (ABTS-2000).
Abutment screw should be tightened to 30 Ncm.

Casting abutments

Casting abutments - Metal base



CAT-H10ST
Titanium Base Casting
CAC-H10ST
CoCr Base Casting

Hexagon
Length 11mm
Height 1.0mm



CAT-C10ST
Titanium Base Casting
CAC-C10ST
CoCr Base Casting

Cylinder
Length 11mm
Height 1.0mm

Casting abutments - Plastic - Hexagon



CAS-H10ST
Hexagon
Length 11mm
Height 1.0mm



CAS-C10ST
Cylinder
Length 11mm
Height 1.0mm

Straight abutments - Casting Esthetic - Plastic - Hexagon



CAP-H10ST
Length 10.5mm
Height 1.0mm



CAP-H20ST
Length 11.5mm
Height 2.0mm



CAP-H30ST
Length 12.5mm
Height 3.0mm

Angulated abutments 15° - Casting Esthetic - Plastic - Hexagon



CAP-H1015
Length 9.9mm
Height 1.0mm



CAP-H2015
Length 10.9mm
Height 2.0mm



CAP-H3015
Length 11.9mm
Height 3.0mm

Angulated abutments 25° - Casting Esthetic - Plastic - Hexagon



CAP-H1025
Length 8.5mm
Height 1.0mm



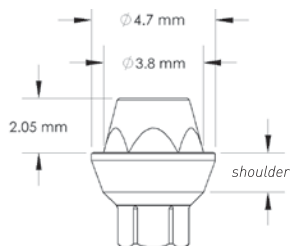
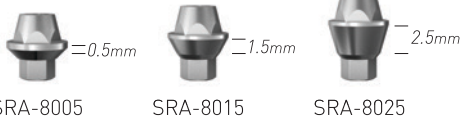
CAP-H2025
Length 9.5mm
Height 2.0mm



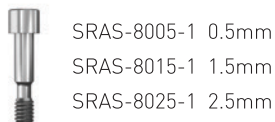
CAP-H3025
Length 10.5mm
Height 3.0mm

Screw retained abutments

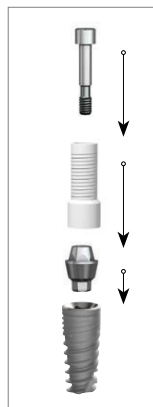
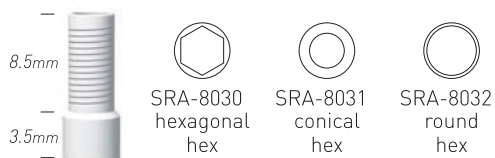
Abutments



Screws

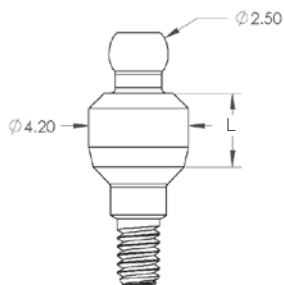
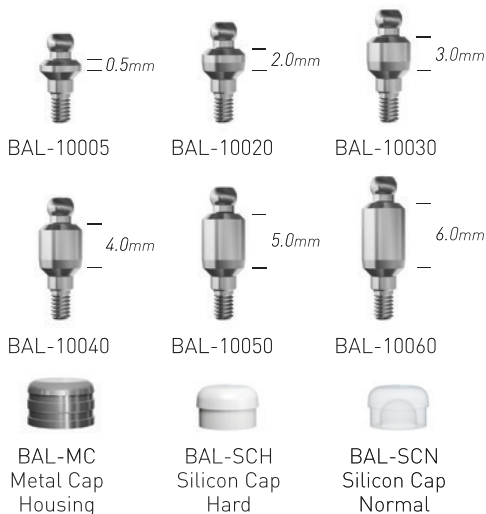


Sleeve - Burnout plastic



Ball attachment

Attachments



LIBERATOR[®]

Overdenture restoration attachment retained

Liberator kit 0° - 10°



LIB-ABT10
h 1.0mm



LIB-ABT20
h 2.0mm



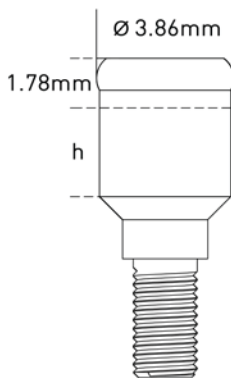
LIB-ABT30
h 3.0mm



LIB-ABT40
h 4.0mm



LIB-ABT50
h 5.0mm



Retention inserts



1.2 kg



1.8 kg



2.5 kg
LIB-PACK



LIB-LAB



LIB-TCAP



LIB-SPACER



LIB-KEY

Analog



LIB-ANA01

Transfer



LIB-TR

Multi-unit abutments



Multi-unit kit comes with:

- Pre-mounted abutment screw
- Pre-mounted carrier



Angulated 17°



MUA 0217



MUA 0317

Angulated 30°



MUA 0330



MUA 0430

Straight



MUA-10ST
1.0mm shoulder



MUA-20ST
2.0mm shoulder



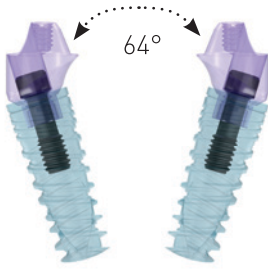
MUA-30ST
3.0mm shoulder



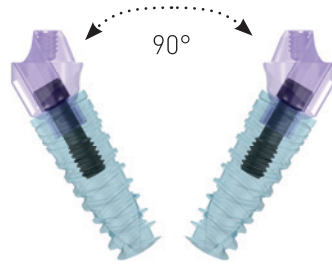
MUA-40ST
4.0mm shoulder



MUA-50ST
5.0mm shoulder



The 17° Multi-unit abutment allows an insertion path of up to 64° divergence.



The 30° Multi-unit abutment allows an insertion path of up to 90° divergence.

Multi-unit accessories



MUB-9237
Ball screw



MUP-9140
Closed tray
transfer



MUP-9141
Open tray
transfer



MUS-9150
Open tray
screw



MUP-9137
Analog



SRA-8131
Sleeve
burnout
Plastic



MUP-9160
Temporary
abutment



MUS-9170
Titanium
screw



MUP-9180
Cylinderead
healing cap



MUP-9181
Conical
healing cap

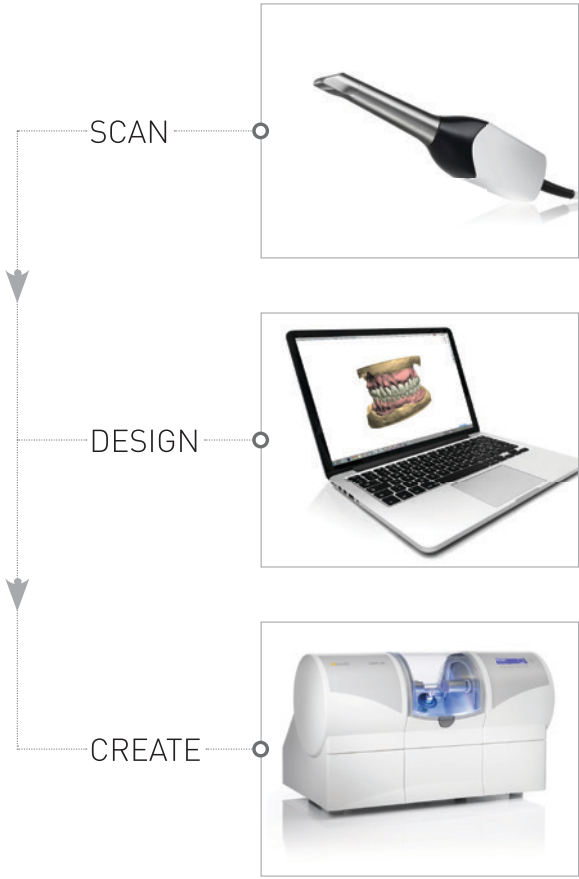


TMUA-200350
Straight Multi-unit
hand & ratchet key

CAD/CAM SOLUTIONS



Simplify and streamline the complex process of fabricating restorations.



exocad

dental wings
10 YEARS
coming soon

sirona
The Dental Company

3shape
coming soon

Scan Abutments

Scan abutment implant level



SAIM-8201

Scan abutment multi-unit level



SCMU-8202

Ti-Base

Ti-base Hexagonal



TBHX-8230

Ti-base Cylindrical



TBCL-8231

Ti-base multi-unit



TBMU-8235

Scan body



SBDY-8200

Pre-Milled Blanks

Ti-blank Ø9.0mm



BLKT-8220-9

Ti-blank Ø12.0mm



BLKT-8220-12

Ti-blank Ø6.0mm

Multi-Unit



BLKMU-8220-6

Digital Analogs for Printed Models

Implant level



IDA-2030

Multi-unit level



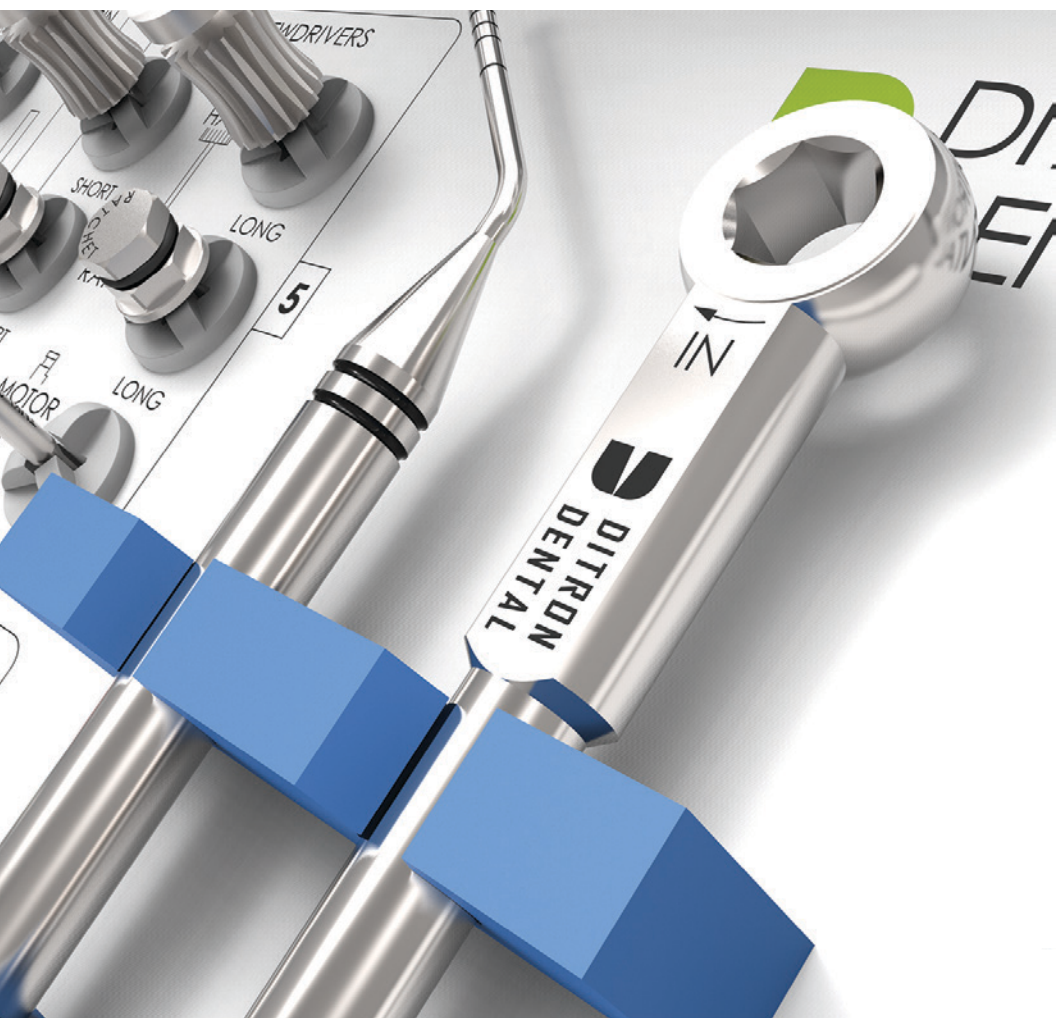
MUDA-2040

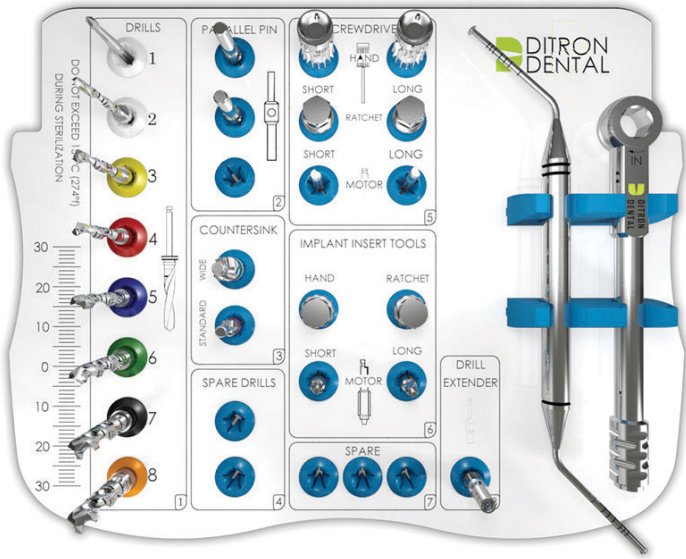
Digital analog screw



SDA-8040

SURGICAL KITS





Countersink wide
DRCW-300520



Marking Drill 1.9
DRM19-300419



Countersink standard
DRCS-300510



Pilot Drill 2.0
DRP20-300420



Short hand & ratchet key
THKS-200290



Twist Drill 2.5
DRT25-300425



Long hand & ratchet key
THKL-200300



Twist Drill 2.8
DRT28-300428



Drill extender
DREX-300500



Twist Drill 3.2
DRT32-300432



Long motor insertion tool
TMAL-200260



Twist Drill 3.8
DRT38-300438



Short motor insertion tool
TMAS-200250



Twist Drill 4.5
DRT45-300445



Parallel pin
TPP-200330



Twist Drill 5.0
DRT50-300450



Short hand key 1.25
THSS-200210



Ratchet wrench
RW-200311



Long hand key 1.25
THSL-200220



Optional:
Torque ratchet 10-45 Ncm
TRW-200310



Short ratchet key 1.25
TRAS-200230



Long ratchet key 1.25
TRAL-200240



Depth probe
TDP-200320



Long motor adaptor
TMAL-200280






















Short motor adaptor
TMAS-200270



Mini surgical kit

cat. no. MSBOX-002



Short hand & ratchet key THKS-200290		Countersink standard DRCS-300510	
Long hand & ratchet key THKL-200300		Marking Drill 1.9 DRM19-300419	
Drill extender DREX-300500		Pilot Drill 2.0 DRP20-300420	
Long motor insertion tool TMAL-200260		Twist Drill 2.5 DRT25-300425	
Short motor insertion tool TMAS-200250		Twist Drill 2.8 DRT28-300428	
Short ratchet key 1.25 TRAS-200230		Twist Drill 3.2 DRT32-300432	
Long ratchet key 1.25 TRAL-200240		Twist Drill 3.8 DRT38-300438	
Long motor adaptor TMAL-200280			
Short motor adaptor TMAS-200270			
Ratchet wrench RW-200311			
Optional: Torque ratchet 10-45 Ncm TRW-200310			

D-tube

The D-tube – a revolutionary Drill Stopper Kit!

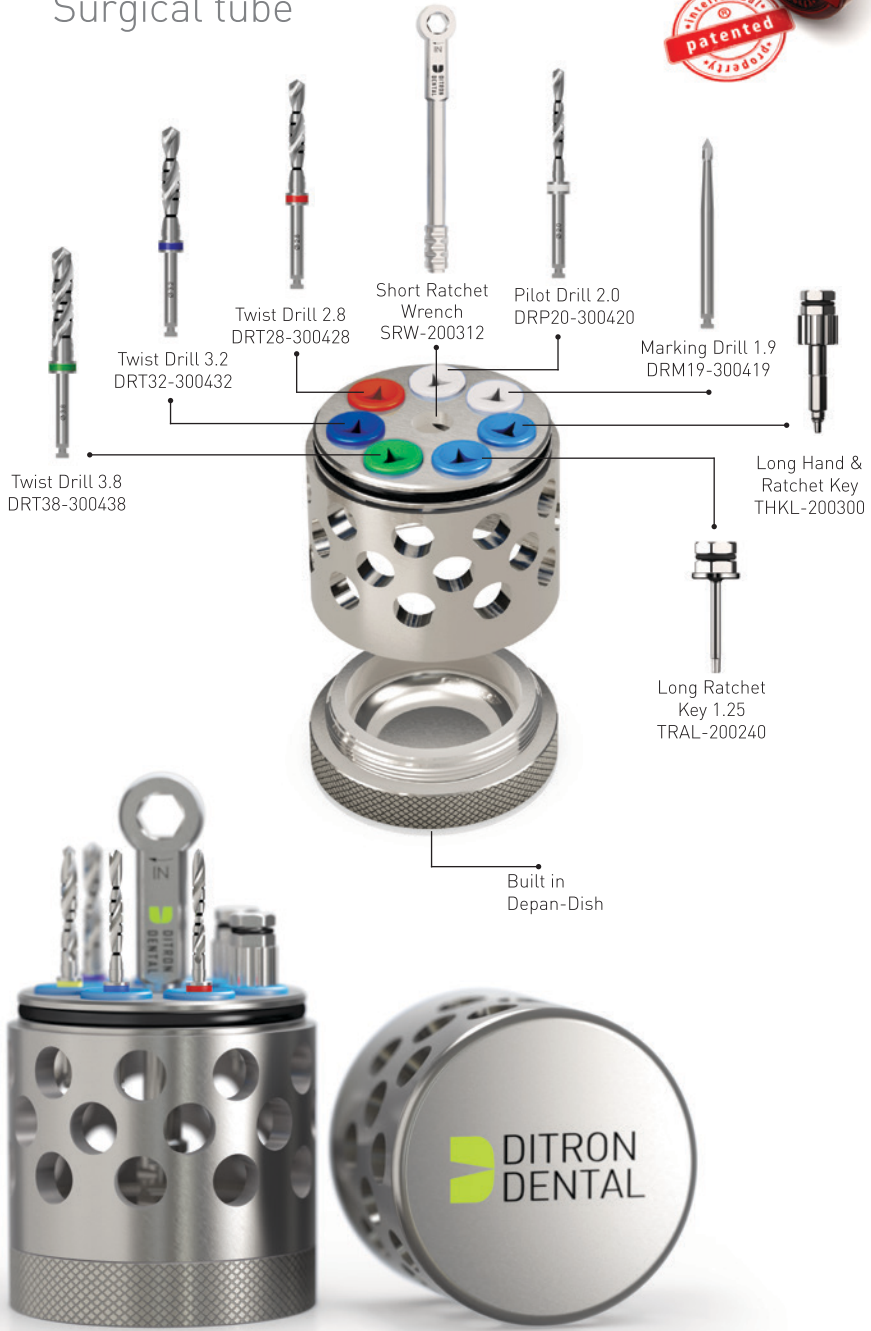
This exceptional device allows you, the dentist, to experience both precision and safety through a unique and patented design.

Every segment contains only one single length of integral stopper drills (8mm, 10mm, 11.5mm and 13mm) eliminating the risk of mistake.

Simply open the length size segment you need and follow the drill protocol by diameter. Furthermore, in every segment you will find an integral measurement gage to ensure the correct drill length – adding an additional safety feature. The D-tube base is designed to serve as a holder for drills and other needed surgical tools while the top cover can be used to hold used drills during the surgery.



Surgical tube



Twist Drill 3.8
DRT38-300438

Twist Drill 3.2
DRT32-300432

Twist Drill 2.8
DRT28-300428

Short Ratchet
Wrench
SRW-200312

Pilot Drill 2.0
DRP20-300420

Marking Drill 1.9
DRM19-300419

Long Hand &
Ratchet Key
THKL-200300

Long Ratchet
Key 1.25
TRAL-200240

Built in
Depan-Dish



RESEARCH AND DEVELOPMENT

We aim to provide the best dental implant solutions, and are continuously involved in science based research and development. We work with leading universities both in Israel and overseas. One leading example is our involvement in a novel gene based Peri-implantitis research:

"Genes Associated with Alveolar Bone Loss Around Implants and Teeth as a Result of Bacteria Induced Inflammation".

For this research, Ditrón Dental was challenged to create the smallest fully functional dental implant in the world.

This 50 micron diameter implant has allowed researchers to develop, for the first time, an innovative murine model for bacteria-induced alveolar-bone-loss around Titanium implants. Such a model can challenge the hypothesis that peri-implantitis and periodontitis are diverse phenotype and genotype conditions that share a common genetic background.



Actual implant size in catalog magnified X20 shown side by side to a 1 Euro coin

DITRON DENTAL



Ditron Dental Ltd.
2 Haofe St. South Ind. Zone
P.O.B 5010 Ashkelon 7815001. Israel
Tel: +972.8.6711884
www.ditrondental.com
Email: info@ditrondental.com

Ditron Precision's quality system complies with international quality control standards: ISO 13485:2003/2012 – Quality Management System for Medical Devices, ISO 9001:2000 – Quality Management System and CE Directive for Medical Devices 93/42/EEC.

All products are 510 (k) cleared by the FDA.

All rights are reserved.

Warning: only a licensed dentist should use these products.

