

MESTEL SAFETY

Innovation in full-face masks

SAFETY
protection equipment



Main Business

Mestel Safety is a company of the Oceanreef Group which has two manufacturing plants of 6,000 and 40,000 sq/feet in Vista, CA - USA and Genoa - Italy. The Company is an ISO 9001-2015 certified company and also a NATO classified supplier. The production facility includes injection machine, electronic components assembling, finished goods assembling and a testing department.

OCEANREEF
underwater, naturally.

The diving equipments produced by Mestel Safety are distributed under the Registered Trademark, OCEAN REEF.

SAFETY
engineering

- Engineering
- R&D in Material Science and Technology
- Project Management

SAFETY
electronics

- Electronics
- Under Water Communication Systems

SAFETY
protection equipment

The Military and Respiratory PPEs are known under the Mestel Safety brand or, simply, as SAFETY Protection Equipments.



ARIA19 *Kit*

ARIA19 *Kit*

Manufactured by:
MESTEL SAFETY Srl
Via Arvigo, 2
16010 Sant'Olcese
Genova (Italia)
Tel. +39 010 7082011
Fax +39 010 7082099

OCEANREEF Inc
2510 Island View Way
Vista, CA 92081



OCEANREEF
underwater, naturally.
SAFETY

protection equipment
engineering
electronics



mestelsafety.com/protection-equipment/
oceanreefgroup.com/covid19/

ARIA19 Kit



SCAN QR CODE
INAIL EXTRAORDINARY
VALIDATION

INAIL

ISTITUTO NAZIONALE PER L'ASSICURAZIONE
CONTRO GLI INFORTUNI SUL LAVORO

VALIDATED PPE

Mestel Safety, received from INAIL (National Institute for Insurance against Accidents at Work) the extraordinary validation for Personal Protection Equipment.



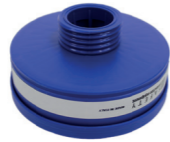
ARIA19

The patented breathing circulation system of the mask prevents its fogging thanks to the air circulation inside.



APA (Aria Protection Adaptor)

The APA is compatible with filters that comply with EN 148-1 standard.



P3 Filter

Filter, with the standard thread connector (EN148-1, RD 40-1/7"). This filter protects against aerosols, particles, mist, fumes and dust.



RD40-22mm

The RD40-22mm, screwed on the APA, is compatible with filters that comply with ISO 5356-1.

FEATURES



VARIOUS COMPATIBLE
FILTERS



CO₂ TESTED



REUSABLE



FOG FREE

COMPATIBLE WITH

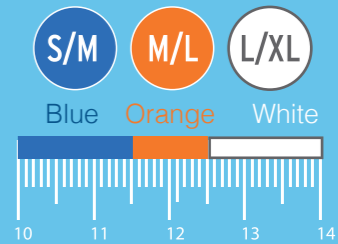


OPTICAL LENS SUPPORT

It is possible to insert the removable optical lens support inside the Aria 19 mask. Customizable corrective lens can be mounted on the support, or corrective standard lens from -1 to -4 are available as alternative.

FIND YOUR SIZE

To find your ideal size measure the distance between the top of your nose and the bottom of your chin.



(Expressed in cm.)

FILTER CONNECTION
EN 148-1

FILTER CONNECTION
22mm - ISO 5356-1

SANIFICATION

After some preliminary tests carried out on Aria 19, APA and RD 40 adaptors, the following sanitization procedures are proposed.

They are based on recommendations from CDC, OSHA, the National Academy of Science and many hospitals in Europe, Canada, and USA. All the Aria 19 mask and adaptors are functional and seal well after each sanitization process.

More information is available on our website (Oceanreefgroup.com/covid19/) or by scanning the QR code.



SCAN QR CODE
INSTRUCTIONS FOR USE,
WARNINGS AND SANITIZATION

HOW IT WORKS

Potentially contaminated air is breathed in from the user, drawing it in from only one inlet (the filter adaptor APA) through the filter body, and through a one-way only valve.

The filter purifies the air according to its certified properties and characteristics.

The safe, breathable air then moves onto the visor, pushed onto it from a deflector placed in the topside of the mask: this action prevents fogging.

The air is then drawn through one-way valves in the orinasal pocket where the user breaths in. Once the user exhales, the two one-way valves in the specifically designed orinasal pocket, prevent the air's return in the ocular part of the mask.

