

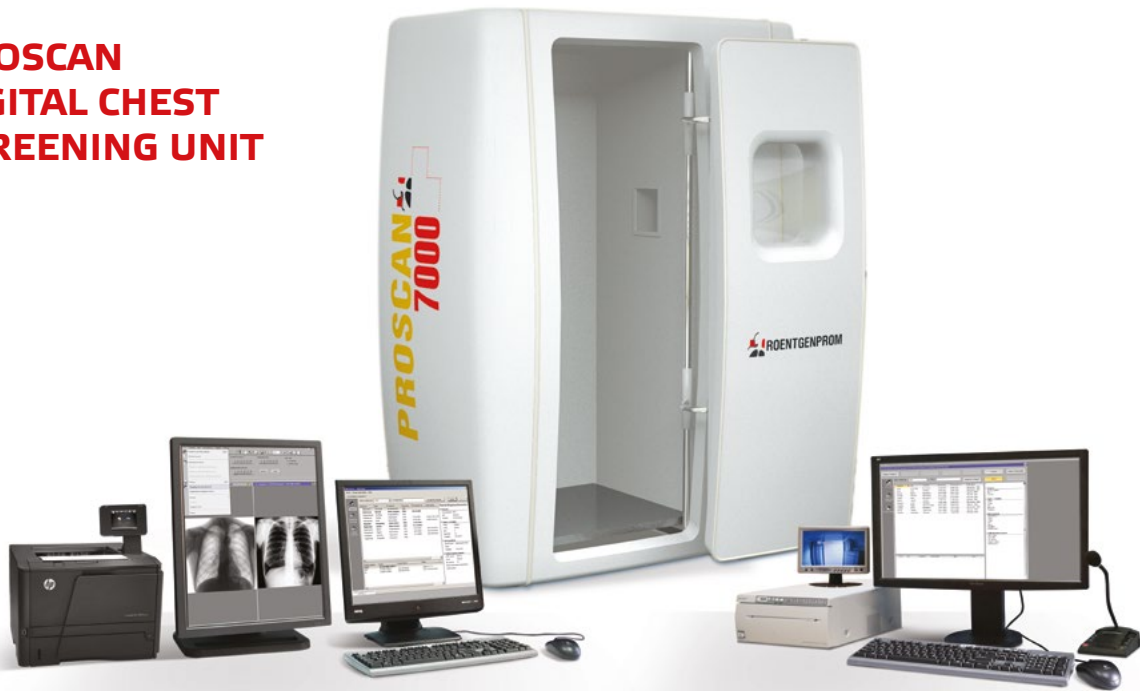


DIGITAL CHEST SCREENING UNIT

PROSCAN SERIES



PROSCAN DIGITAL CHEST SCREENING UNIT



SPECIAL PROSCAN SOFTWARE APPLICATIONS

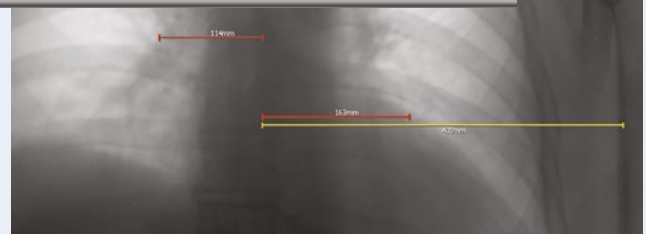
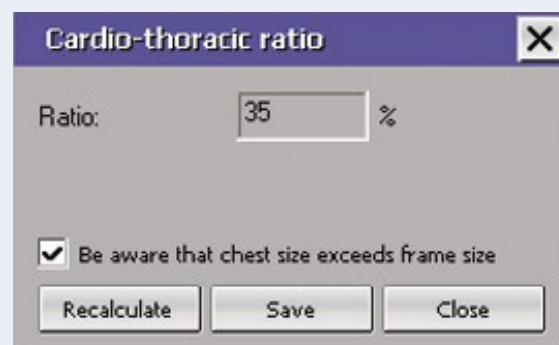
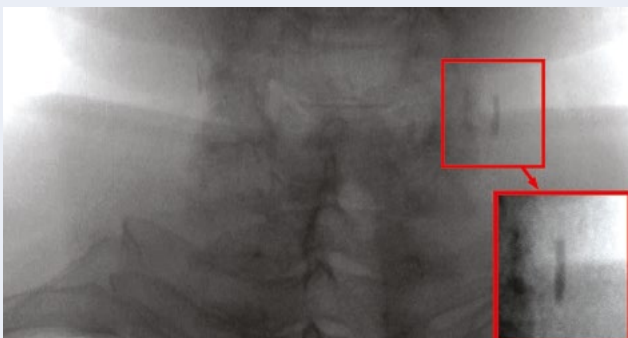
The carotid artery atherosclerotic plaque calcification detection

This option serves for prevention of ischemic cerebral stroke, which in most cases (80%) is a result of extracranial atherosclerosis.

Detection of calcium-density shadows in the carotid artery projections is simplified by the use of the carotid artery atherosclerotic plaque calcification hardware-and-software system.

The cardiothoracic ratio calculation function

Heart enlargement is detected automatically (physician participation is not required) through analysis of digital fluorograms of the thoracic spine, thus allowing identification of patients at risk for cardiac diseases involving heart enlargement. The physician can correct measurements using the manual adjustment option while viewing the image.



THE BEST SOLUTION FOR DIGITAL CHEST SCREENING

The ProScan chest screening unit is the best solution for low-dose preventive examination of the chest in anteroposterior and lateral standing position, as they enable digitization of images.

The principal advantages of these machines include a low effective dose, instantaneous high quality imaging, and guaranteed reliability of operations.

The linear silicon detector does not require periodic maintenance.

The X-ray protective cabin made of modern

composite materials and equipped with a motorized door and a patient elevator allows installation of the system in a room with no special X-ray protection and decreases staff radiation exposure many times.

The ProScan rightly occupies a leading position in the Russian market.

ProScan-2000

Spatial resolution 2.2 line pairs/mm

Contrast sensitivity 1 % if the radiation dose to the image receptor per image is 200 μ R

ProScan-7000

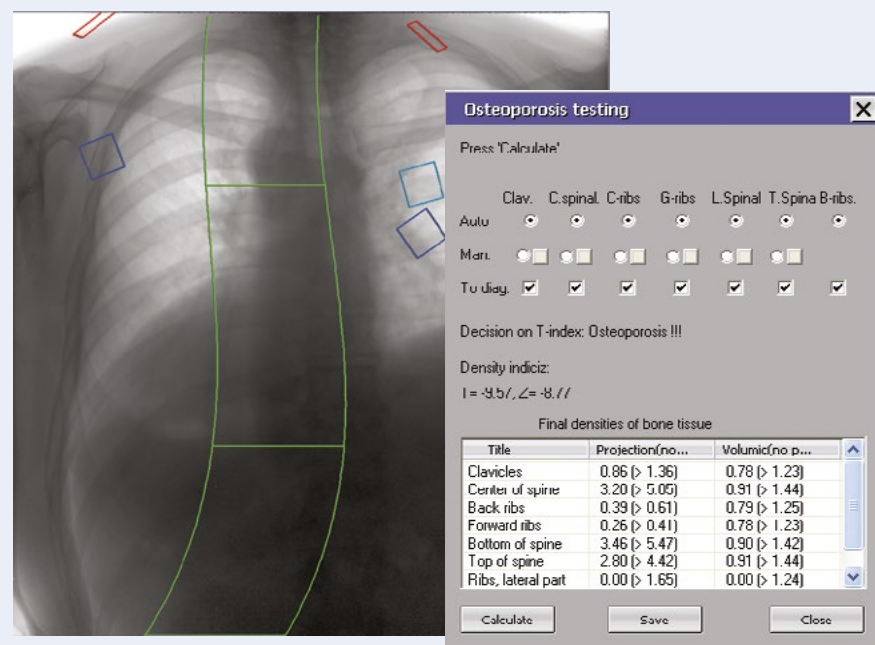
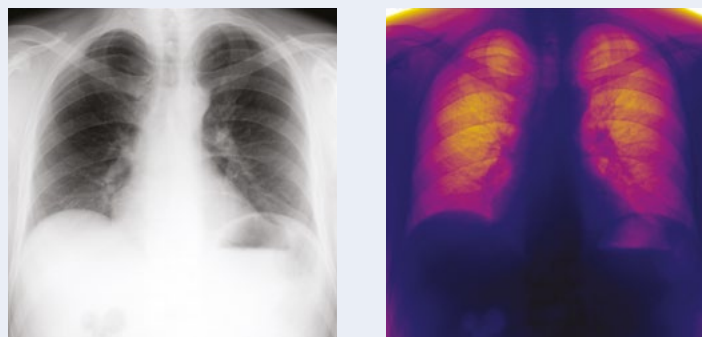
Spatial resolution 3.1 line pairs/mm

Contrast sensitivity 1 % if the radiation dose to the image receptor per image is 250 μ R

The osteoporosis screening test function

Identification of patients at risk for osteoporosis and bone fractures is particularly important for elderly population. This technique allows identification of a subset of patients who should be referred for further clinical assessment with dual-energy X-ray absorptiometry, after which these patients will be able to receive appropriate treatment for osteoporosis with subsequent follow-up.

Inversion and false-colour imaging



2D profile

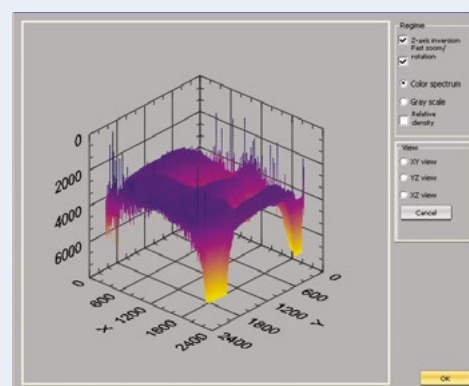
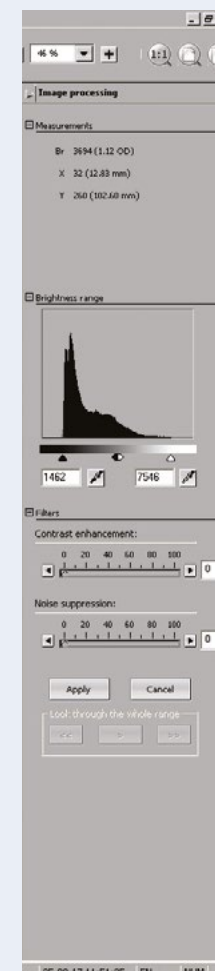


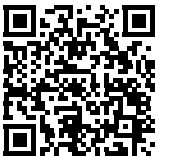
Image optimization

One of the advantages of digital X-ray imaging over films is that the former enable to combine high-quality view of both high-density and low-density objects in the same image.

For instance, one can evaluate bones and shadows overlapping the heart shadow and the pulmonary pattern at the same time or small low-density lesions in a patient with lymphangitis without obtaining two images in two modes. This, however, requires that the physician perform appropriate digital processing of the image. The process can be accelerated and simplified by using the entire dynamic brightness range of the image.



DIGITAL CHEST SCREENING UNITS LINEUP



3D tour



Our chest screening units are available in a wide range of configuration options.

We are prepared to offer a solution that will meet the working requirements and budget of any health center: scanning and chest screening units with a CCD-based camera, open-type or equipped with a protective X-ray cabin, stationary or mobile cabinets for digital chest screening.

Mobile truck-based digital chest screening cabinet

Equipped with ProScan or ProMatrix chest screening unit with an X-ray protective cabin



ProMatrix

Chest screening unit with a CCD-based camera



Fluoro-ProGraph

A series of chest screening units with a CCD-based camera and one or two stands



The ProScan is the best device for chest screening

NP JSC AMICO

2-oy Kozhukhovskiy proezd,
29, bld. 5, Moscow, Russia,
115432



www.amico.ru

tel.: +7 495 742-41-60

fax: +7 495 742-94-14

info@amico.ru

* The manufacturer reserves the right to make changes in complete, technical parameters and design of the equipment.

The state-of-the-art digital chest screening unit is not simply a lung disease screening device. The ProScan software developed by our specialists helps obtain more diagnostic data with dedicated software applications.

CE 0483



© NP JSC AMICO, 2019. All rights reserved.

MAY-2019