



SKANRAY

NOTHING IS OPAQUE



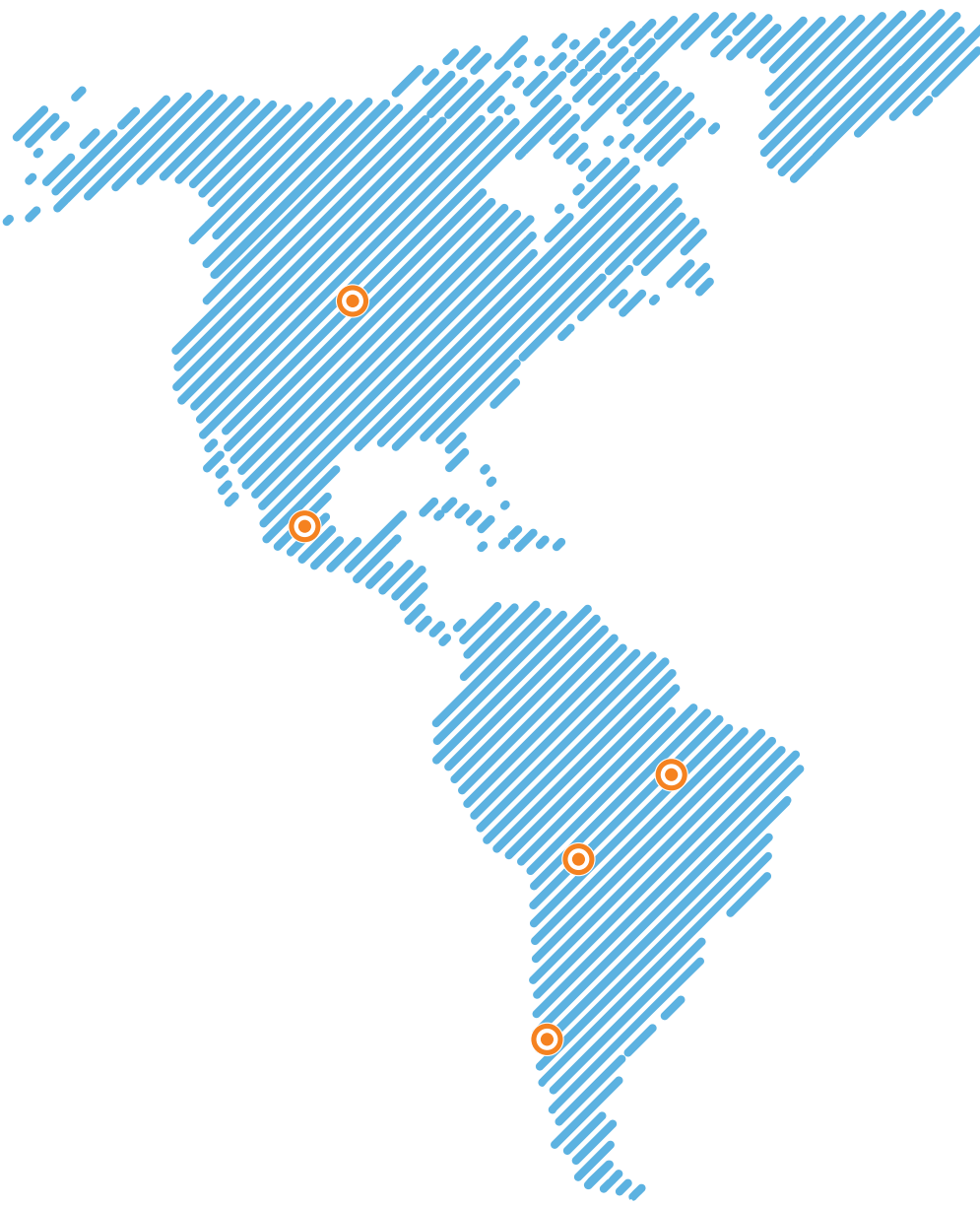
RADIOGRAPHIC IMAGING | SURGICAL IMAGING | PATIENT MONITORING | CARDIAC CARE
DIATHERMY | RESPIRATORY CARE | DENTAL X-RAY | ANAESTHESIA DELIVERY

PRODUCT RANGE CATALOGUE
EUROPE

100,000+
INSTALLATIONS
ACROSS THE GLOBE

700+
MEDTECH
PROFESSIONALS

50+
WORLD CLASS
PRODUCTS



Global Footprint Manufacturing Plants

80+
ADVANCED
TECHNOLOGY
PATENTS

5
MANUFACTURING
PLANTS
GLOBALLY

Global Footprint

Skarray brings together the best of design and technology compliant with international standards enabling its presence in several markets globally.



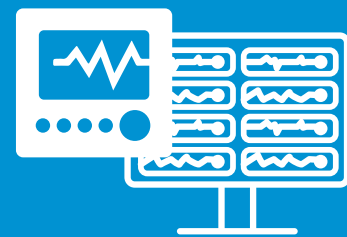
RADIOGRAPHIC
IMAGING



CARDIAC
CARE



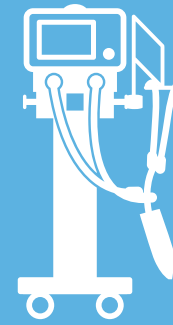
SURGICAL
IMAGING



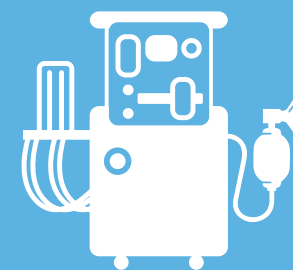
PATIENT
MONITORING



DENTAL
X-RAY



RESPIRATORY
CARE



ANAESTHESIA
DELIVERY



PRECISION, RELIABILITY, CARE

Products & Solutions



Radiographic Imaging

Extremely light-weight, easily manoeuvrable and versatile. Multiple positioning options.

High frequency generator with near-zero leakage radiation. Provides high resolution images.



SKANMOBILE

- ▶ Upto 200 kHz, 4 kW, 100 mA with APR (Anatomically Programmed Radiography)
- ▶ Integrated console on tube head
- ▶ Draws clean power from mains
- ▶ Near zero leakage radiation
- ▶ Easy to move (<85 kg)
- ▶ 90° collimator rotation for easy positioning
- ▶ Tube-head rotation for minimal mobility patients
- ▶ Light field intensity min 160 Lux @ 1m
- ▶ Suitable for NICU, ICU, Trauma & Ortho



SKANMOBILE^{DR}

- ▶ Ultralight mobile HF DR system
- ▶ Upto 200 kHz, 4 kW, 100 mA with APR (Anatomically Programmed Radiography)
- ▶ Integrated console on tube head
- ▶ Bar-code reader for easy patient data input & storage (optional)
- ▶ Near zero leakage radiation
- ▶ 90° collimator rotation for easy positioning
- ▶ Tube-head rotation for minimal mobility patients



Workstation

- ▶ Quad Core Processor
- ▶ 12" QHD (2160 x 1440 Pixels) resolution LCD display
- ▶ Dual Touch 10 finger capacitive touch screen with IP-55 protection
- ▶ 8GB RAM and 256 GB (ROM) Solid State Drive (Optional for upgrade)
- ▶ Interface - USB 3.0, LAN & HDMI
- ▶ 11 hours Back-up with twin batteries

Flat panel detector

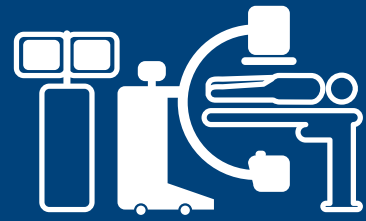
- ▶ Direct deposit CSI scintillator, wireless panel
- ▶ 14" x 17" active display area
- ▶ Image preview time: <10 seconds
- ▶ Exposure Control: Full Field Automatic Exposure Detection
- ▶ Dual band 2.4GHz/5GHz wireless transmission

SKANRAD⁴⁰⁰

CE certification in progress

- ▶ 32kW HF Fixed RAD System
- ▶ kVp: 40kV-125kV in steps of 1kV
- ▶ mA: 10mA-400mA in 17 steps
- ▶ mAs range: 0.32 mAs to 630 mAs in 34 steps
- ▶ Exposure time range: 5 ms to 5 sec.
- ▶ Integrated tube head without bulky cables
- ▶ Rotating anode with dual focal spots (0.6 & 1.3)
- ▶ Fully motorized horizontal and vertical movements
- ▶ 120° Tube head rotation
- ▶ 180° Tube head vertical column rotation
- ▶ 4 way floating table
- ▶ Well routed minimal conduit for cables
- ▶ 10.4" LCD Touch screen tube head Console
- ▶ Floor/wall mount console with 10.4" LCD touch screen (optional)
- ▶ Chest bucky suitable for cassette or FPD of sizes up to 17" x 17"
- ▶ Hand held touch screen console with X-ray exposure parameters
- ▶ Digital Inclinometer for tube head positioning
- ▶ LED collimator & optional AEC control





Surgical Imaging

Multi-functional and DICOM compatible. Can be used for a wide range of applications.

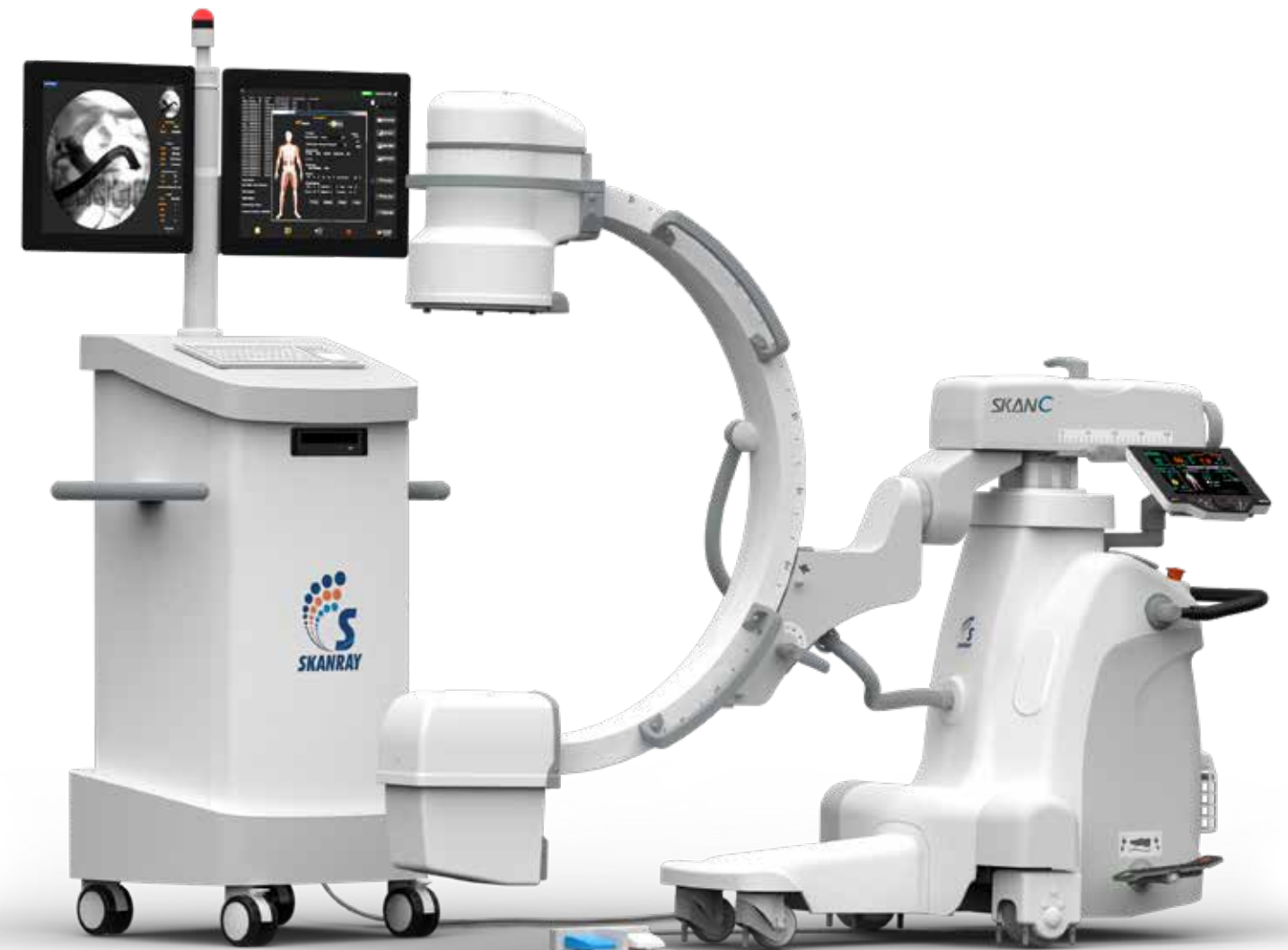
Provides high-resolution images.



SKAN C

- ▶ High-Frequency generator technology with switching range from 80-250 kHz
- ▶ Near Zero leakage radiation
- ▶ 3.5 kW dual Focus monoblock generator with proprietary radiation shielding technology
- ▶ Ideal for use in Neurology, Orthopaedic, Urology, Gastrointestinal, Pain management, Interventional & Peripheral Vascular Images
- ▶ Image capture with 1k x 1k resolution for exceptional image quality
- ▶ 10.4" TFT LCD Touch console with optical encoder and hot keys to ease operation
- ▶ Laser Aimer & Virtual Collimation to assist Region of Interest selection without exposure
- ▶ Vascular Mode, DSA, Trace & Roadmap features as standard
- ▶ Virtual Dose management system to ensure absolute safety
- ▶ Image Enhancement Features including Digital Zoom & Contrast control for added viewing capabilities
- ▶ DICOM 3 support & storage of over 100,000 images
- ▶ Multi-Window Interface for increased viewing convenience
- ▶ 3.5kW, 80-250kHz HF Flouro, kVp range: 40 - 110, mA range: 0.2 - 8
- ▶ 9" triple field IITV
- ▶ CAN controlled Circular and Rectangular collimation
- ▶ Pulse Fluoroscopy mode upto 12mA
- ▶ Low fluoro upto 3mA, High fluoro upto 8mA, Burst fluoro up to 30 fps (frame per second)
- ▶ Airkerma display: Cumulative, Current and DAP

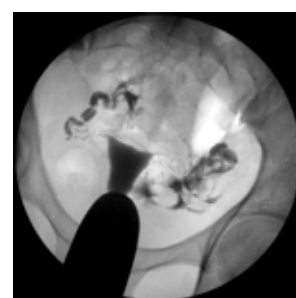
Console Keypad



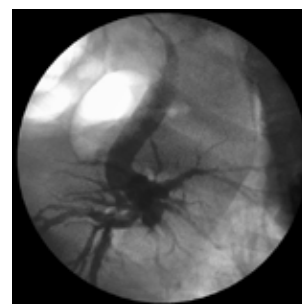
Applications



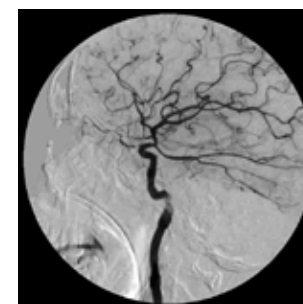
Spine Procedure



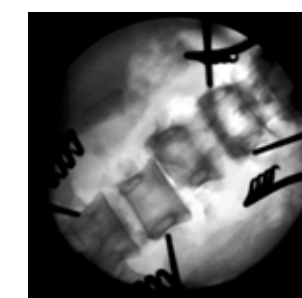
Reproductive



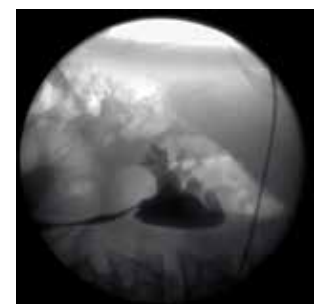
Gastrointestinal



Cerebral



Neurology



Urology



Patient Monitoring

Large portfolio catering to multiple clinical requirements, acuity level and diverse care environments.

Flexible with optimized cost of ownership.



STAR 90



- ▶ 10 channel sleek modular monitor with 15" high resolution LED touch display
- ▶ Advanced features like SatSeconds™, LoSat™, IPI™, etc.
- ▶ ST segment analysis & Arrhythmia analysis, OxyCRG & drug dose calculation
- ▶ Advanced Alarm Management System
- ▶ Connectivity: USB, HDMI, IABP interface, Central nursing station interface (wired/wireless)
- ▶ Optional Microstream/ Mainstream EtCO₂
- ▶ HL7 support for HIS interface
- ▶ Bed to bed connectivity



Standard Configuration



Optional Modules



STAR 65



- ▶ 8 channel modular monitor with 12.1" high resolution LED touch display
- ▶ Advanced features like SatSeconds™, LoSat™, IPI™, etc.
- ▶ ST segment analysis & Arrhythmia analysis, OxyCRG & drug dose calculation
- ▶ Advanced alarm management system
- ▶ Connectivity: USB, HDMI, IABP interface, Central nursing station interface (wired/wireless)
- ▶ HL7 support for HIS interface
- ▶ Bed to bed connectivity

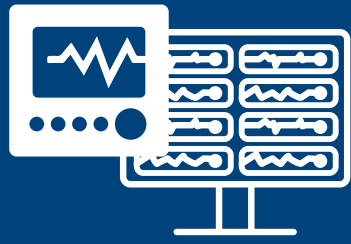


Standard Configuration



Optional Modules





Patient Monitoring

Diverse in terms of screen size, modularity and parameter support, from light weight single-para device to fully featured multi-para equipment.

Ability to connect and communicate with larger networks.



TruSKAN
S600



CE certification
in progress

- ▶ 6 channel monitor with 12.1" TFT colour display
- ▶ Comprehensive monitoring: ECG, Respiration, Dual Temperature, NIBP, Dual IBP, SpO₂ & microstream EtCO₂
- ▶ User configurable layout with multiple layout selections
- ▶ Advanced features like SatSeconds™, LoSat™ & IPI™
- ▶ Networking Capabilities: Wired & wireless connectivity to Skanray's Central Nursing Station
- ▶ Support for HL7 based interfacing with HIS
- ▶ Vital Trends & Storage of 168 hours
- ▶ Seamless navigation through fast access keys and optical encoder control
- ▶ ST segment analysis & Arrhythmia analysis as standard

Standard configuration (S600/S500)



Optional modules (S600/S500)



TruSKAN
S500



CE certification
in progress

- ▶ 6 channel monitor with 10.4" TFT colour display
- ▶ Comprehensive monitoring: ECG, Respiration, Dual Temperature, NIBP, Dual IBP, SpO₂ & microstream EtCO₂
- ▶ User configurable layout with multiple layout selections
- ▶ Advanced features like SatSeconds™, LoSat™ & IPI™
- ▶ Networking Capabilities: Wired & wireless connectivity to Skanray's Central Nursing Station
- ▶ Support for HL7 based interfacing with HIS
- ▶ Vital Trends & storage of 168 hours
- ▶ Seamless navigation through fast access keys and optical encoder control
- ▶ ST segment analysis & Arrhythmia analysis as standard

Standard configuration (S600/S500)



Optional modules (S600/S500)





Cardiac Care

Ergonomic design, light weight and portable.

Provides easy-to-use functionalities for cardiac care.



CardiAid® Public Access Defibrillator

- ▶ Current-based biphasic defibrillation technology
- ▶ Accurate ECG detection algorithm
- ▶ Ready to use adult / paediatric treatment
- ▶ Pre-connected Electrodes
- ▶ Up-to 210 Shocks in a new battery
- ▶ Clear & easy illustrations and verbal instructions
- ▶ In accordance with ILCOR 2015 ERC resuscitation guidelines
- ▶ Configurable voice prompts for CPR duration, sequence and chest compressions
- ▶ Ready-to-communicate with a Gateway and ability to send real-time self test results
- ▶ Available in Semi-automatic and Automatic models



CardiAid Pro+

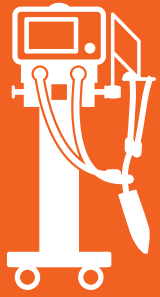
CE certification
in progress

- ▶ Current controlled biphasic defibrillation
- ▶ Synchronised cardioversion
- ▶ 3L/5L ECG support
- ▶ More than 100 shocks from a new fully charged battery
- ▶ Quick energy selection option via rotary switch
- ▶ Data storage & event summary
- ▶ 6.5" Colour LED display
- ▶ Built-in thermal printer
- ▶ AED with voice prompts
- ▶ Non-invasive demand / fixed pacing
- ▶ Up to 20 seconds of ECG on screen with twin ECG view
- ▶ NIBP, SpO₂ monitoring with alarms
- ▶ Suitable for adult/paediatric applications
- ▶ Multifunction adhesive pads
- ▶ Less than 7 seconds to charge upto 300J
- ▶ Data Storage upto 350 ECG records

CardiAid Pro

- ▶ Current controlled biphasic defibrillation
- ▶ Synchronised cardioversion
- ▶ 3L/5L ECG support
- ▶ Less than 8 seconds to charge upto 300J
- ▶ More than 100 shocks from a new fully charged battery
- ▶ Quick energy selection option via rotary switch
- ▶ Data storage & event summary
- ▶ 6.5" Colour LED display
- ▶ Built-in thermal printer





Respiratory Care

SKANRESPIRO SKANRESPIRO plus

- ▶ Paediatric to Adult ICU Ventilator
- ▶ Volume & pressure controlled breath types
- ▶ Invasive & non-invasive applications as standard
- ▶ In-built nebulizer port
- ▶ Upto 4 hrs battery back up
- ▶ Easy integration with Pranaa medical air compressor (optional)

Modes

- ▶ A/CMV-VC
- ▶ A/CMV-PC
- ▶ SIMV-VC+PS
- ▶ SIMV-PC+PS
- ▶ CPAP-VC
- ▶ CPAP-PC
- ▶ NIV-PC

Advanced Modes

In SkanRespiro Plus

- ▶ APRV
- ▶ BI-LEVEL
- ▶ A/CMV-PRVC
- ▶ SIMV-PRVC+PS



PRANAA Medical Air Compressor

- ▶ Standby for centralised air supply
- ▶ Continuous pressure and hours-run display
- ▶ Peltier driven de-humidification
- ▶ Pump temperature protection
- ▶ Easily attachable with SkanRespiro™ and SkanRespiro Plus™



Intraoral X-ray

Wall mount



Console

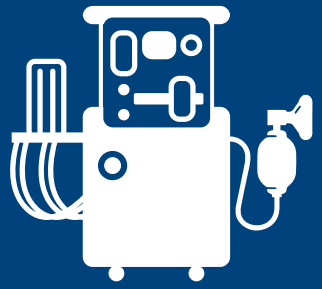


Floor stand



INTRASKAN DC

- ▶ Near zero leakage radiation
- ▶ 3 point control - kV, mA & ms
- ▶ 60-70 kV range in steps of 1kV
- ▶ 4-8 mA range in steps of 1mA
- ▶ Perfectly balanced zero-drift scissor arm
- ▶ Operator console with APR
- ▶ Intraskan DC with 0.4, 0.5 & 0.8mm Focal spot



Anaesthesia Delivery

Feature-rich, Safe and provides a perfect mix of performance and robustness.

Quality ventilation options with an intuitive user interface.



SKAN Siesta

- ▶ Advanced anaesthesia workstation with 3 gas pipeline and cylinder connectivity
- ▶ 5 Tube Rotameter with Low Flow Technology
- ▶ Multi-layered barotrauma protection
- ▶ Pneumatic Anti-Hypoxia device with ratio control
- ▶ Dedicated additional N₂O cutoff
- ▶ Independent Auxiliary O₂ output
- ▶ Circle absorber with soda lime capacity of 1.3 kg
- ▶ Auto bypass facility for uninterrupted ventilation
- ▶ Integrated spirometry and oxygen monitor sensors
- ▶ 10.4" intuitive ventilator touch display with advanced modes as standard
- ▶ Internal 3 litre O₂ reservoir
- ▶ Dual Select-A-Tec vaporizer mount with interlocking feature
- ▶ Discernible visual and audio alarms with customizable settings
- ▶ Built-in battery back-up for support up to 3 hours

Modes

- ▶ VC
- ▶ VC-SIMV
- ▶ PC
- ▶ PC-SIMV
- ▶ PSV
- ▶ Spontaneous (SP)



ATHENA 500i

- ▶ 3 gas 5 tube low flow Anaesthesia workstation
- ▶ Dedicated additional N₂O cutoff
- ▶ Independent Auxiliary O₂ output
- ▶ AHD with ratio control
- ▶ Internal 3 litre O₂ reservoir
- ▶ I:E ratio : 3:1 to 1:8
- ▶ Paw display
- ▶ FiO₂ monitoring
- ▶ PIP measurement
- ▶ 6.5" color touch display
- ▶ Volume & pressure wave forms
- ▶ Tidal Volume: 20-1600 ml
- ▶ P-V/F-V loops, PEEP control
- ▶ Advanced closed loop feedback
- ▶ Tidal Volume delivery auto correction
- ▶ Trigger, Apnea time
- ▶ Monitoring MVi, MVe & RR

Modes

- ▶ VC
- ▶ VC-SIMV
- ▶ PC
- ▶ PC-SIMV
- ▶ PSV
- ▶ Spontaneous (SP)





- Skanray International Headquarters
- Skanray Sales office EUROPE

EUROPE

Email: sales-emea@skanray.com
Telephone: +39 051 1990 5448



Skanray Europe SRL

Skanray Europe SRL: Via Cicogna 36, 40068 San Lazzaro di Savena, Bologna, ITALY. Phone (+39) 051 625 5019



RADIOLOGY



MONITORING



CARDIOLOGY



ANAESTHESIA



VENTILATION



DENTAL



AMSTERDAM | BOLOGNA | MEXICO CITY | MIAMI | MYSORE | SAO PAULO | SUZHOU

Skanray continuously upgrades its technology, performance and safety features. Pictures of products & accessories and specifications featured in this catalogue are only indicative. Please refer to the commercial offer document for exact specifications and performance.

515-004359-0_Rev 1