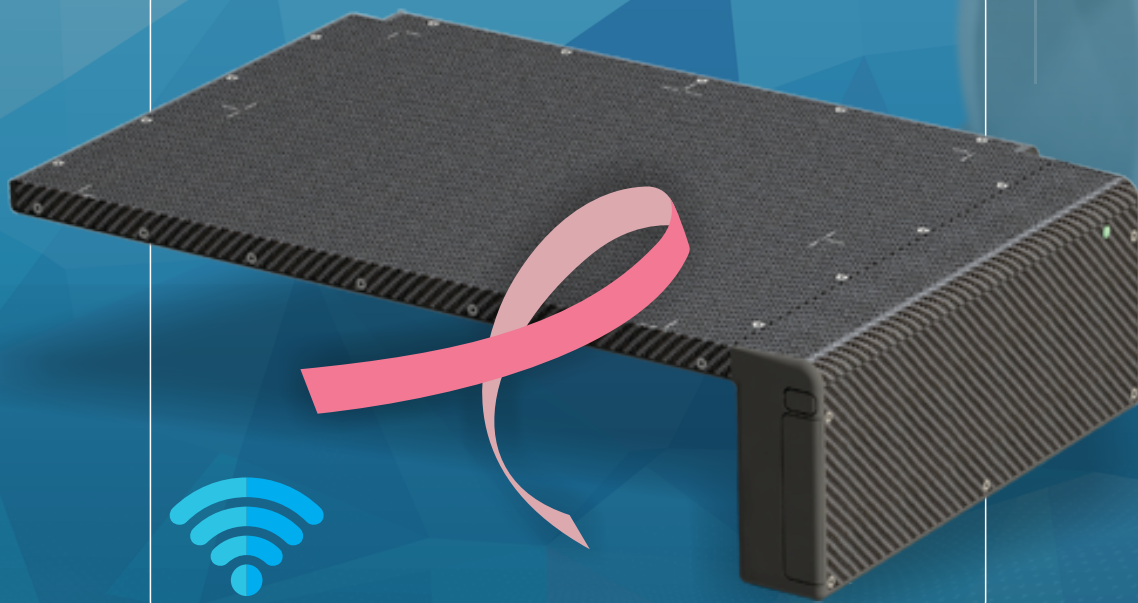




MEDICAL
SCIENTIFIC

SOLO™ DMR

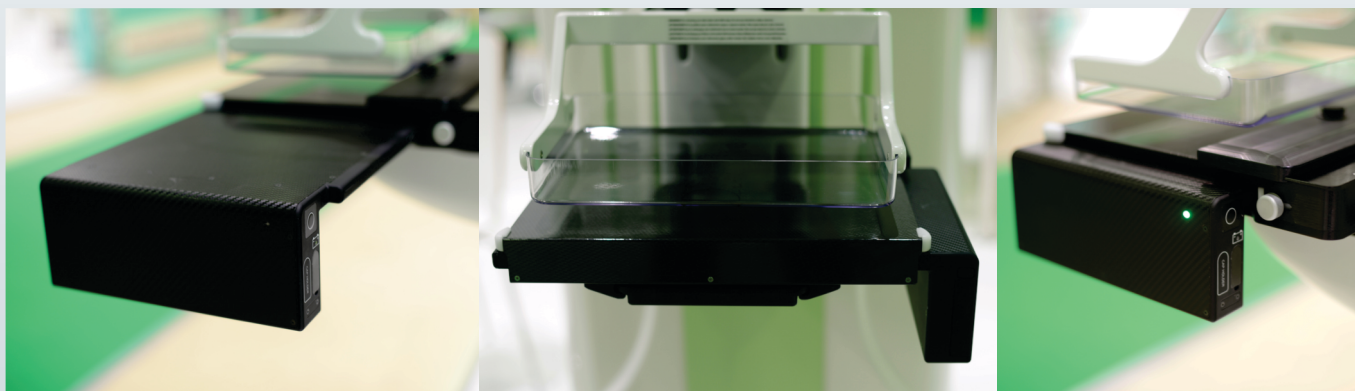
Wireless Mammography Retrofit System



Introducing the world's first portable wireless detector intended for use in mammography applications. SOLO™ DMR has the world's highest resolution image with a 49.5µm pixel size as well as other unique technical characteristics. It is convenient to use through a simple operation process.

At the forefront of digital technology, SOLO™ DMR provides the user with increased capabilities and allow mammography diagnoses at a new standard of excellence!

Innovation and Attention to Detail
www.medicalscientific.com



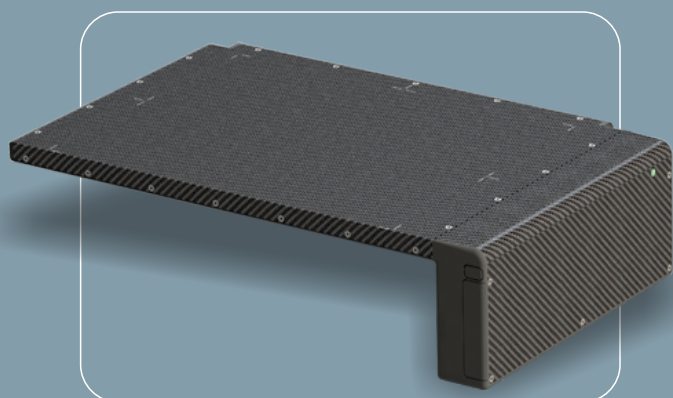
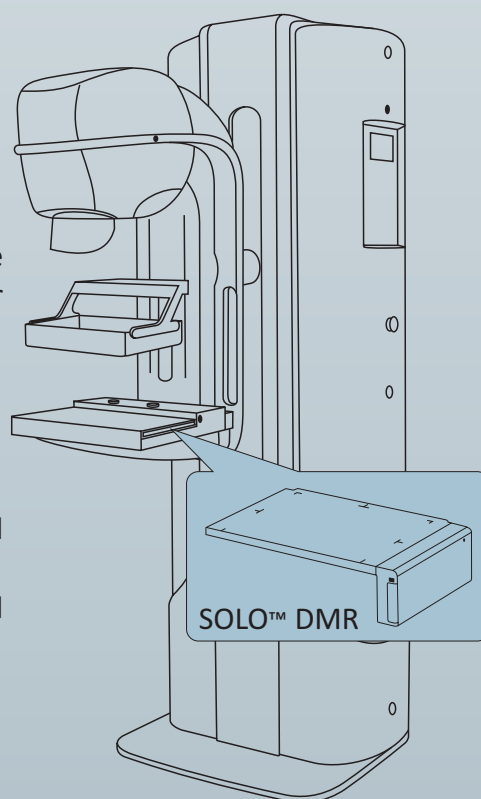
SOLO™ DMR digital detector can be inserted easily into an existing analog bucky size 24x30

The SOLO™ DMR retrofit detector provides a new lease on life for analog mammography systems. It is no longer necessary to purchase expensive digital mammography systems when a simple upgrade with the SOLO™ DMR is available. Your analog system can now be easily converted into a modern digital system without any changes to the structure of the system.

Advantages of the SOLO™ DMR

Wireless Portable Mammography Detector:

- Highest resolution in the world with a pixel size of 49.5µm
- Easily convert existing analog systems to digital technology
- Cost-effective solution
- Can be used in any analog mammography system regardless of the manufacturer; simply insert the 24x30cm SOLO™ DMR detector into the existing cassette bucky
- CMOS Technology that is superior for mammography imaging
- Simple and convenient to use
- All the benefits of digital mammography image archiving
- Increased productivity means higher patient throughput
- Diagnose breast abnormalities quickly, earlier, precisely and efficiently using DIARM™ DM (included)
- Analog system consumables, such as cassettes, developers and film are no longer required



SOLO™ DMR



- Pixel Size: 49.5µm
- Format: 24 x 30 cm
- CMOS Technology