

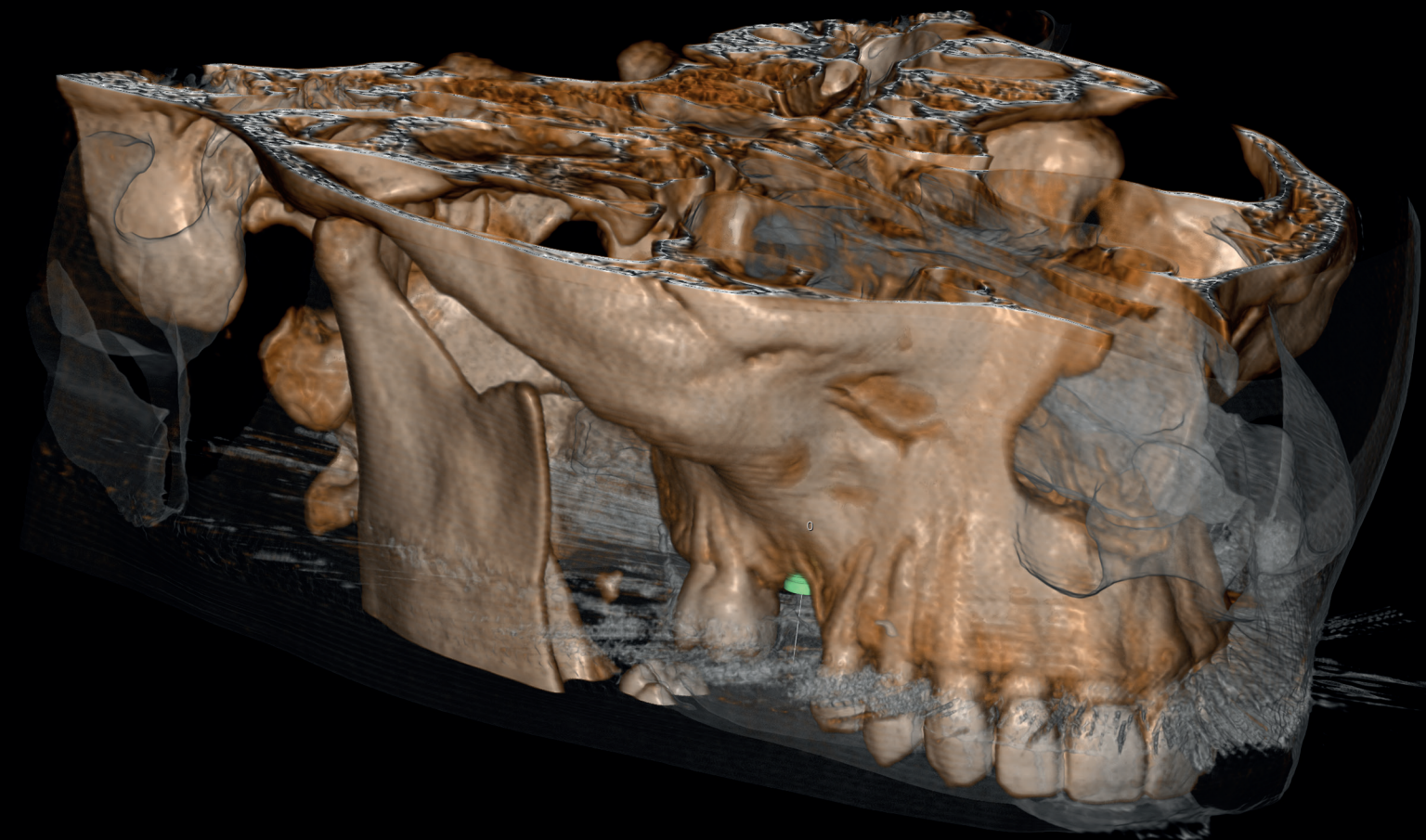
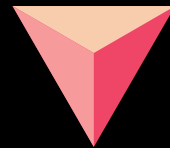
# Implant3D

Dental Implant Simulation

Implant3D



GuideDesign



**Media Lab, Inc.**

Registered Office  
Piazza IV Novembre, 4  
20124 MILANO • Italy

Head Office:  
Via Trieste, 4  
19020 Follo • La Spezia • Italy

Ph (+39) 01.87.51.77.75 r.a.  
Fax: (+39) 01.87.51.18.33  
[www.implant3d.com](http://www.implant3d.com)

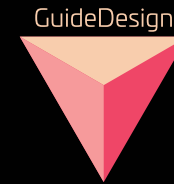
ML-3D-ENG Rev.1 del 02/03/2018



[www.implant3d.com](http://www.implant3d.com)



# IMPLANT PLANNING SOFTWARE



# IN HOUSE SURGICAL GUIDE CREATION

## GuideDesign

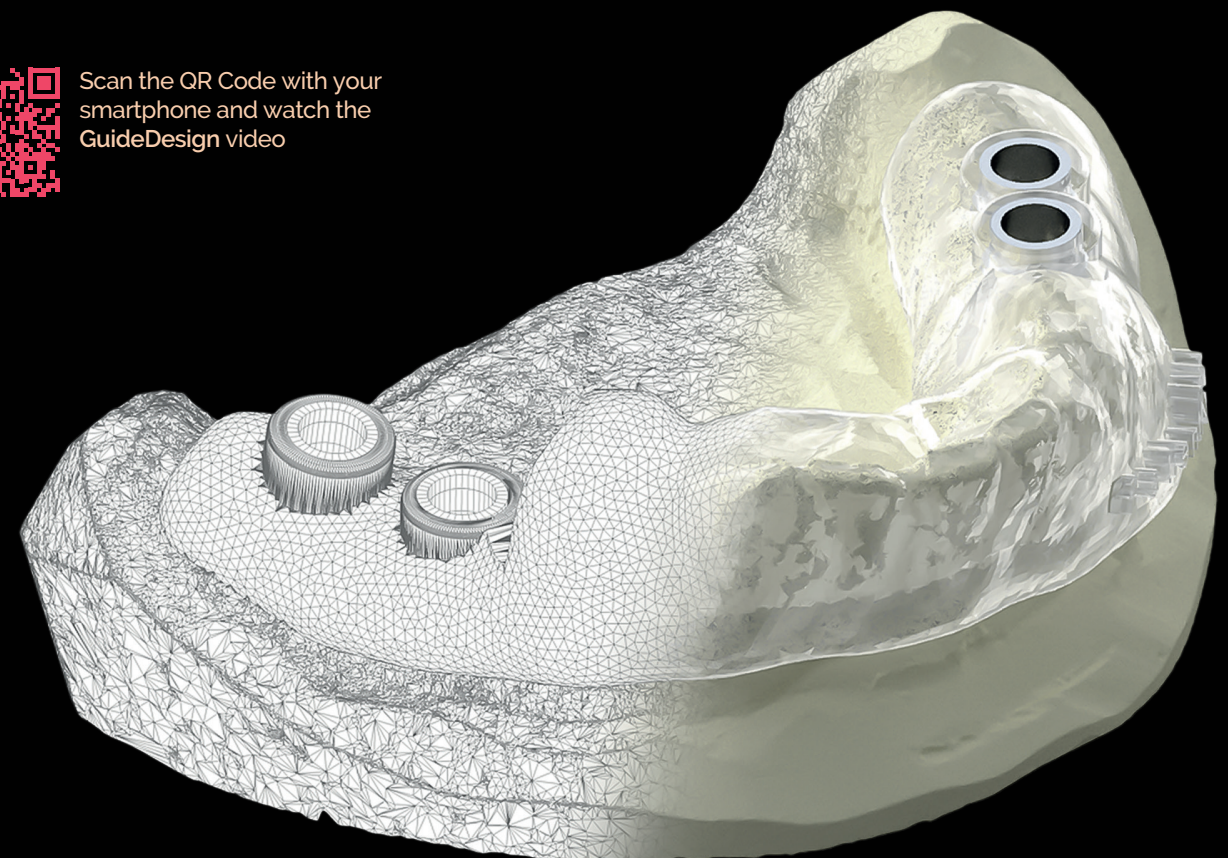
**GuideDesign** is a module of the **Implant 3D** software that allows the design of guides for performing implant-prosthetic intervention in guided surgery. **GuideDesign** allows you to create mucosa supported, teeth supported, bone supported and double-scan CT surgical guides. With a few clicks of the mouse you can create an extremely precise and customized surgical guide. Simply by selecting the edge of the surgical guide and the type of bushes to use, **GuideDesign** generates the STL file ready to be printed with a 3D printer. Advanced features allow you to add text to the surgical template, create inspection holes, and add text to better identify the printed template. **GuideDesign** allows you to export the model for suitably perforated analogues based on the used implant system and the size of the analogues.



GuideDesign is a module of the  
Implant 3D software



Scan the QR Code with your  
smartphone and watch the  
GuideDesign video



## Implant3D

**Implant 3D** is a software that allows you to perform three-dimensional implant simulation directly on your personal computer. It simulates the position of the implants on two-dimensional and three-dimensional models, identifies the mandibular canal, traces panoramics and sections of the bone model and visualizes the three-dimensional bone model with the ability to calculate bone density. Using **Implant 3D**, the dentist can plan implant-prosthetic surgery more safely, efficiently and quickly