

BIOSAFIN

COMPANY PROFILE



Italian Engineering, Technology and
Research **in Dentistry**

RESEARCH

MORE THAN 300 PUBLICATIONS DOCUMENT
THE COMPANY COMMITMENT IN THIS
DIRECTION SINCE 1995.

TECHNOLOGY

PRODUCTIVE HIGH QUALITY ENSURES PRECISION
AND RELIABILITY, EVEN IN AFTER-SALES SERVICE
OVER THE YEARS.

100%
ITALIA

BIOSAFIN

ENGINEERING

ITALIAN KNOW-HOW

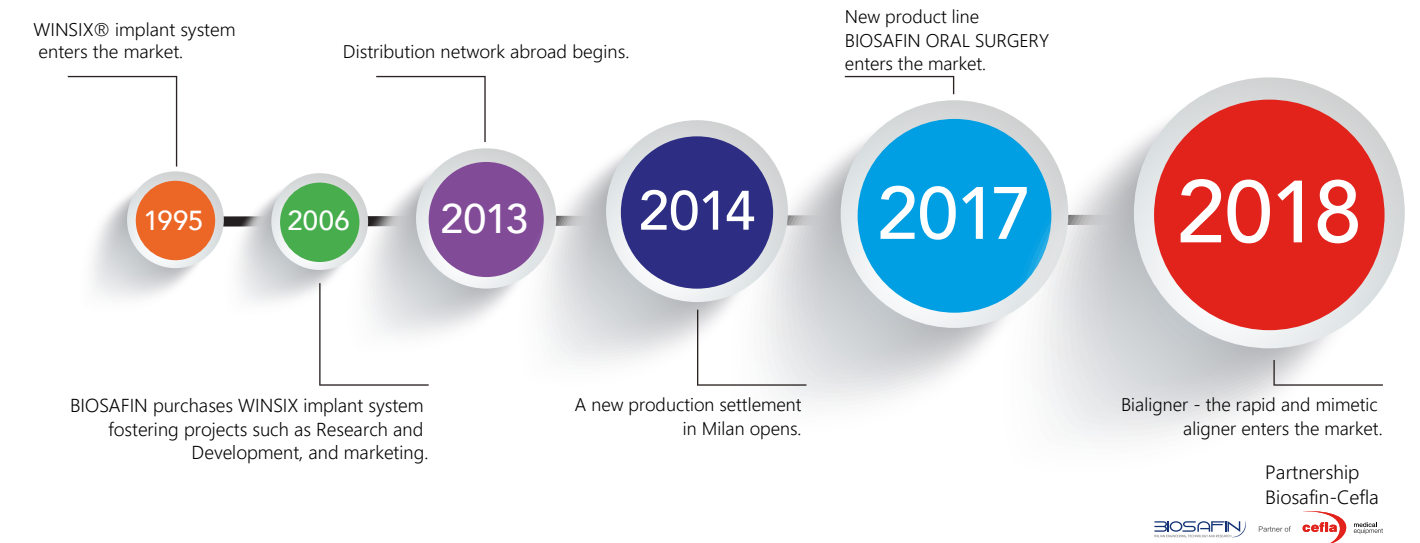
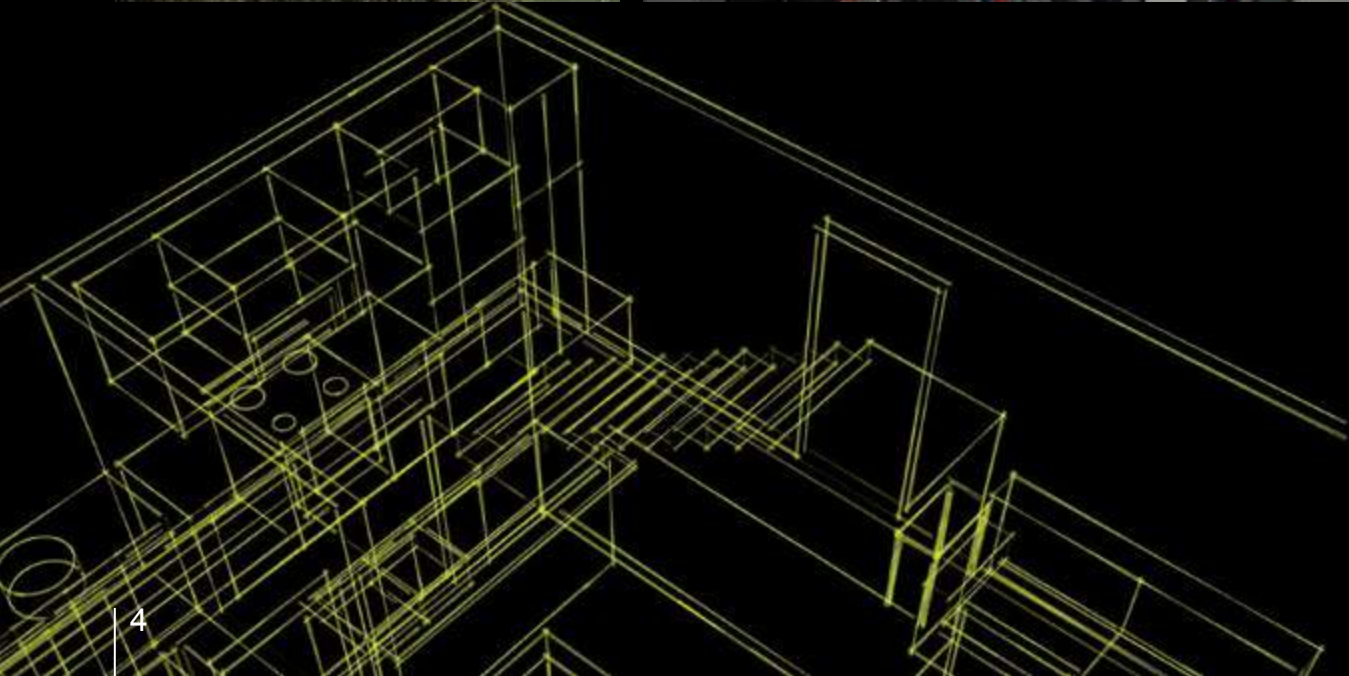
BIOSAFIN is specialized in designing, production and marketing dental implants, customized orthodontic devices, and CAD CAM prosthetics. Our know-how is based on Scientific and Technological Research since 1995, and it applies to valuable solutions of our devices, thanks to advanced technologies.

Production and business management are verified and registered with ISO9001 and ISO 13485, medical devices certifications, which ensure product traceability, pursuing objectives of continuous performance improvement and steady quality.

The sensitivity towards social-health population needs and dental market trends find solutions and opportunities in our production, always supported by a careful and timely pre and after-sales service, to which great professionals contribute, as a solid company group.

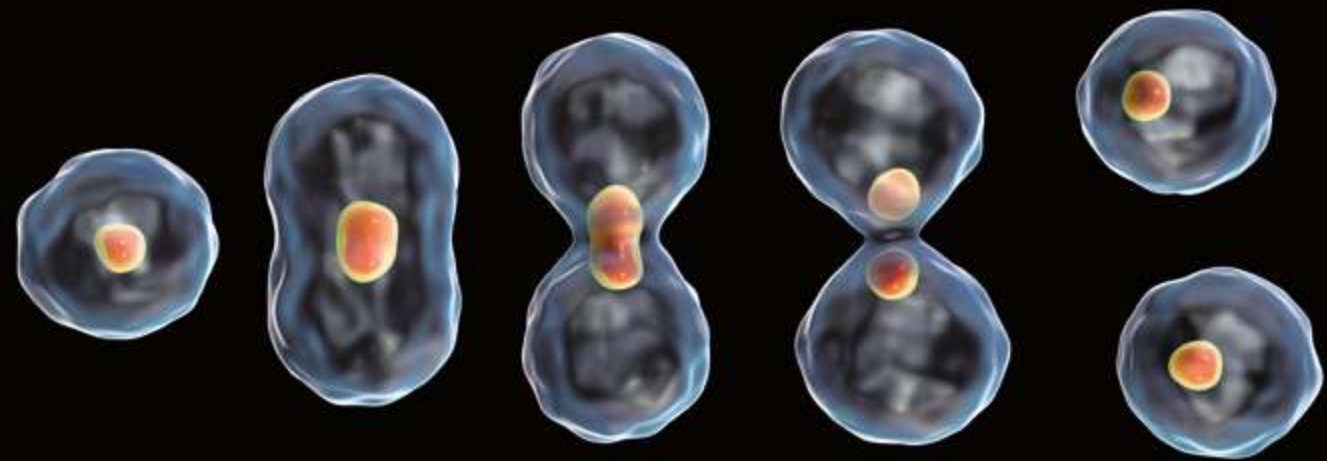
BIOSAFIN

A COMPANY IN CONTINUOUS GROWTH



2 OPERATING HEADQUARTERS IN ITALY:

- **ANCONA** THE ORIGINAL CORE, NOW ADMINISTRATIVE HEADQUARTER
- **MILAN** OPERATIVE SITE AND RESEARCH AND DEVELOPEMENT HEADQUARTER
- ENTIRELY ITALIAN STUDY, RESEARCH AND PRODUCTION
- 25 YEARS OF CLINICAL EVIDENCE
- MORE THAN 300 SCIENTIFIC PUBLICATIONS RELEASED
- WINSIX REGISTRATION IN 58 COUNTRIES WORLDWIDE
- 23 REGISTERED TRADEMARKS
- PRODUCT INTERNATIONAL CERTIFICATIONS
- GROWING INTERNATIONAL COMMERCIAL NETWORK



RESEARCH & DEVELOPEMENT



BIOSAF IN produces implantology and orthodontics devides pursuing the objectives of product scientificity and reliability, professional ethic and reliable commercial approach.

Our commitment to help the Dentist and satisfy every Patient need, is reflected in the constant activity of Scientific Research which lays the foundation for devices production.

Since 1995, WINSIX implant system has been evolving thanks to *translational research* principle:empirical results validation with scientific methods, demonstrated in clinical practise in all the medical studios and clinic where these products are used.

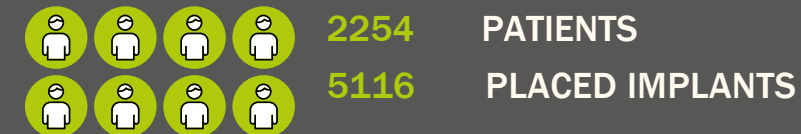
VALUABLE CLINICAL EXPERIENCES

University clinics, important and international clinical poles contribute to foster Scientific Research, today available in more than 300 publications.



SAN RAFFAELE WINSIX PILOT CENTRE

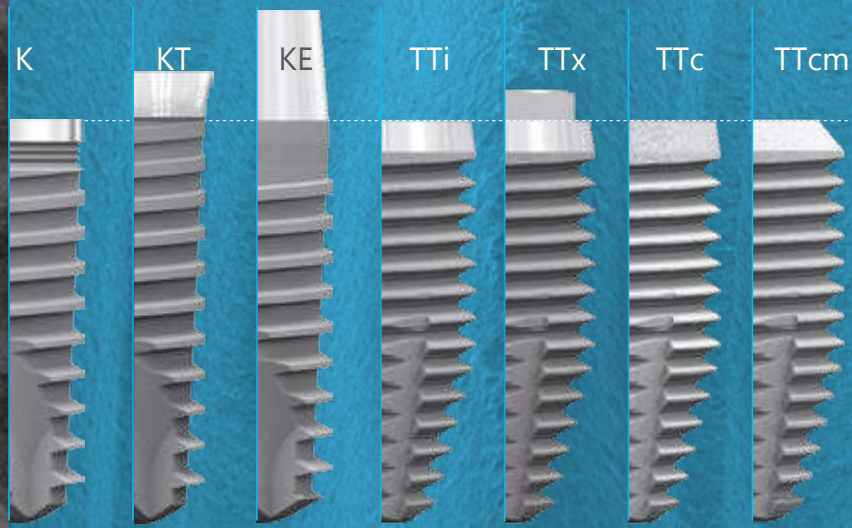
13 YEARS FOLLOW UP OF WINSIX IMPLANT SYSTEM INSTALLATION



8 YEARS FOLLOW UP OF JUST ON 4 TECHNIQUE INSTALLATION WITH WINSIX IMPLANTS



WINSIX®
PERFORMING IMPLANT SYSTEM



MICRO ROUGH SURFACE:

a confirmed value for more than 10 years of clinical application.

WINSIX Certifications



WINSIX: a single and complete implant system.

SIMPLE AND HIGH-PERFORMING IMPLANTOLOGY

**SYNERGY AND EFFICIENCY ARE
WINSIX IMPLANT SYSTEM GUIDELINES, SINCE 1995.**

With the aim of providing increasingly performing and rehabilitation needs suitable devices, all WINSIX implants are compatible with each other, using the same surgical kit and instruments.

Implantology becomes an easy clinical practise, reliable for the dentist and his assistants, who will learn the sequences in order to use instruments and implants, which have different indications.

Result of high technology and in-depth studies related to efficiency and synergy in dental clinic, WINSIX is an elected system for operative linearity and great results.

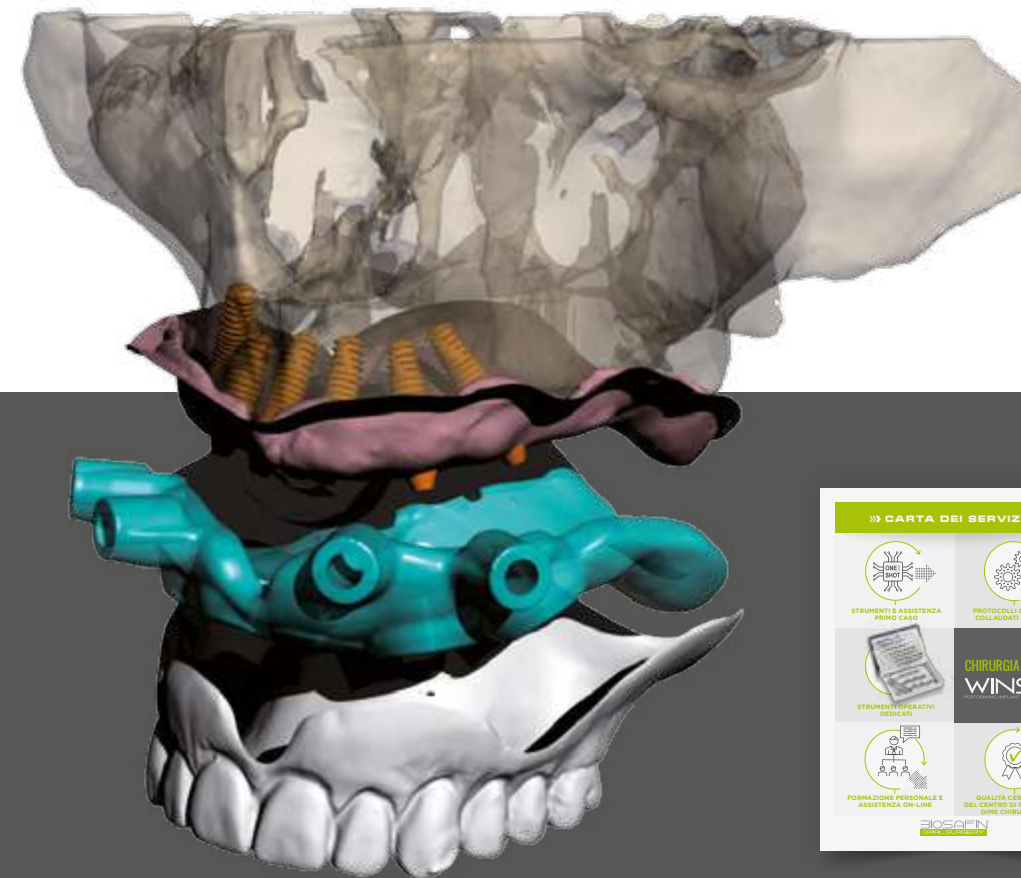
WINSIX Guided Surgery and Digital Workflow

SIMPLICITY AND PREDICTABLE RESULTS IN IMPLANT PROSTHETICS

Guided Implant Surgery is a increasingly widespread clinical practise: thanks to this rehabilitations are precise, targeted and less invasive. 3D technology allow to plan the surgery type, the number of implants and the most suitable prosthetic solution.

Adapting new protocols in surgical procedure may require a first consultation with experts. In Guided Surgery each therapy is a project in itself and the availability of competent references plays a fundamental role.

BIOSAF IN has developed a series of specific products and services which will enable to approach Guided Surgery by proposing the treatment to the Patient, with the support of specialists who, in case of necessity, will provide immediate responses.



Customized prostheses thanks to CAD-CAM digital solutions

CUTTING EDGE TECHNOLOGIES - PRECISE AND TIMELY SERVICES

BIOSAFIN DIGITAL POINT is the department for prosthetics customized production with CAD CAM technologies. Here digital or analogue impressions of the patients are sent - with or without wax-up - and promptly processed.

Every case is planned according to the Dentist indications, in order to realize and send it in a short time.

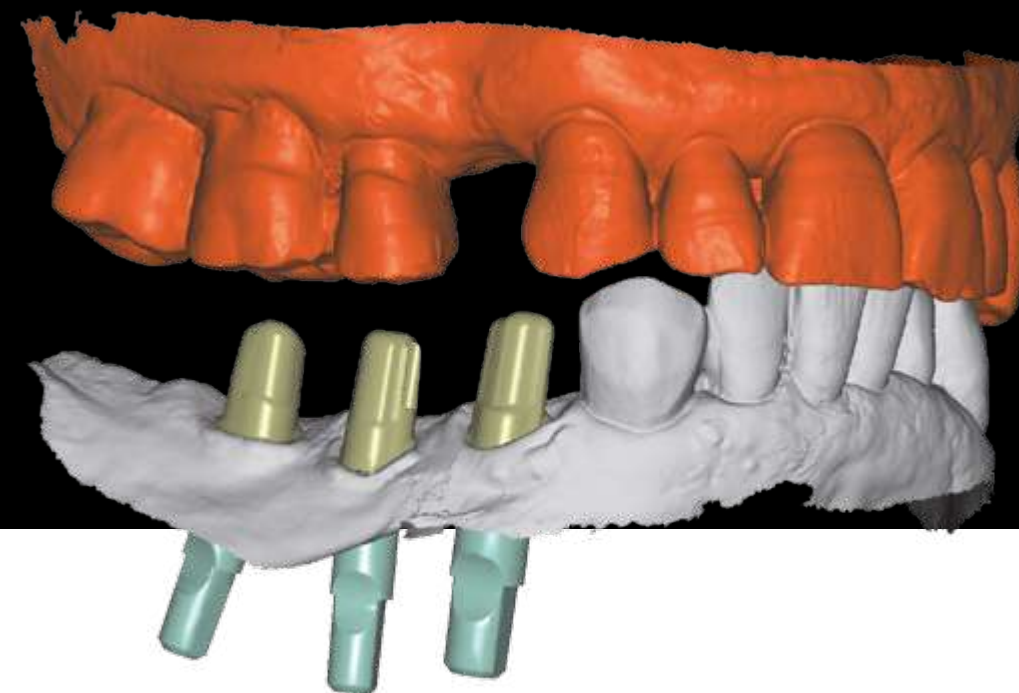
BIOSAF IN deals with the realization of titanium semifinished frameworks, while functional aesthetic finishes are responsibility of the dental technician.

Certified Realization and Service Materials.

- Grade 5 Titanium
- Planning with advanced digital solutions
- High precision production that guarantees WINSIX standards accuracy



WINSIX[®]
PERFORMING IMPLANT SYSTEM



- INDIVIDUAL AND CUSTOMIZED ABUTMENTS
- SCREWD BRIDGES WITH DIRECT TECHNIQUE
- SCREWD CROWNS
- ONE-PIECE TITANIUM TORONTO
- LINEAR BARS





DENTAL ALIGNERS are today an opportunity for many patients who want to align teeth in a less invasive and complex way, compared to old traditional multibracket braces.



BIALIGNER rapid and mimetic dental aligner

BIALIGNER provides customized orthodontic therapies, which are realized following licensed and certified protocols.

Production and services are organized so that the proposal to the Patient, therapy planning and development are simple to use and effective in results, for the full Patient satisfaction.

- CONTROLLED AND CERTIFIED PRODUCTION
- TUTORIAL AND START UP ASSISTANCE
- PRECISE AND CUSTOMIZED SET UP
- FAST AND TIMELY SERVICE
- MARKETING TOOLS FOR THE DENTAL PRACTISE
- BIALIGNER BRAND PROMOTION



Timely patient care is one of the strenghts of the company, to which great resources are dedicated. **SERVICE CHARTER** merged all the instruments and specific consultations to which **BIALIGNER** users can access.



Marketing and Communication Tools

"Open" and transversal network communication has made the association between Dentist activity and a positive values, scientific research and product reliability based Brand important. Our company history accompanies us with evolutionary consistency for more than 25 years, contributing to develop new relations, strengthen partnership with dentists, Opinion Leader and national and international business partners.



• FOR SUPPLIERS

Detailed Catalogues, operative manual and commercial brochures facilitate product presentation and explanation.

• FOR DENTISTS

Precise operative protocols, drafted in collaboration with experienced professionals, guarantee the correct product installation.

SERVICE CHARTERS describe all the facilities that WINSIX or BIALIGNER users may benefit from.

• FOR PATIENTS

Hard copy and videos, current and customisable, are available in the dental practise for presentation and explanation of the therapies.

Patient dedicated website and Social Network are useful tools for the Company to promote correct information about dental treatment.

WINSIX®
PERFORMING IMPLANT SYSTEM

YOUR FIXED AND STABLE
PROSTHETICS ON
SHORT-TERM IMPLANTS

www.implantologiawinsix.it





Highly qualified programs for dental training

The introduction of technologies in dental practises, innovative rehabilitative techniques and more demanding patients make **TRAINING** fundamental for this profession.

Every year we set a timetable full of educational activities, both in their practical and theoretical applications in the clinical, focusing on relevant topics and carried out by well-equipped centres for hands on training, in collaboration with highly experienced teachers.

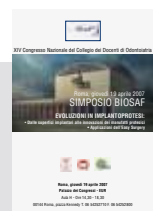
Thanks to live streaming sessions, WINSIX Training has taken an international role. Hundreds of Dentists enjoy our courses, diversified in level and time, in order to meet different needs:

- POST GRADUATE IMPROVEMENT TRAINING
- DENTAL TOPICALITY FULL IMMERSION COURSES
- IN-DEPTH COURSES WITH SPECIALIST
- DISTANCE TRAINING
- LIVE SURGERY SESSIONS
- START UP YOUNG : for new graduates
- START UP WITH DEDICATED SPECIALIST

SCIENTIFIC EVENTS

BIOSAF IN promotes scientific culture in the Dental field.

Thanks to the commitment in sponsorships with national and international Scientific Societies, we attend the best cultural events of this sector, with an high-level company identity.



2007
EVOLUTIONS IN IMPLANT PROSTHETICS



2009
TRANSLATIONAL RESEARCH:
RESEARCH APPLIED TO THE CLINICAL



2011
PROSTHETIC RESOLUTIONS
FIXED ON IMPLANTS THROUGH
TRADITIONAL AND
ALTERNATIVE TECHNIQUES



2013
TRANSLATIONAL RESEARCH:
FROM RESEARCH TO CLINICAL



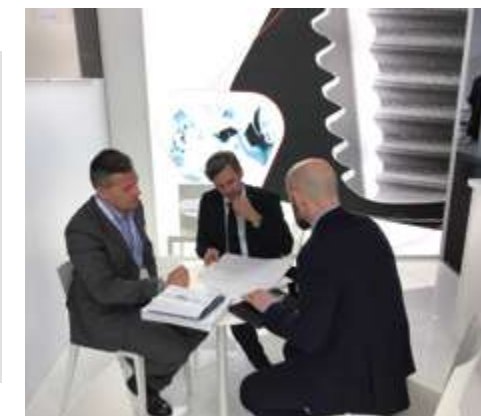
2015
WINSIX: 20 YEARS



2017
PROSTHETIC
REHABILITATIONS SUPPORTED
BY IMPLANTS



2019
LONGEVITY AND
IMPLANTOLOGY::A
NIMPORTANT
CORRELATION FOR THE
DENTAL FIELD FUTURE



Since 2007, every two years, we organize WINISIX company Congress in the wonderful setting of Portonovo, Ancona: this event is more and more strengthened in the scientific field, having reached its seventh edition this year.

Pre-congress courses and clinical tables and a detailed program make this appointment indispensable, dense of experiences and projects, for many dentists who take this opportunity to meet in this welcoming atmosphere.





WINSIX is a
registered trademark
in 58 countries worldwide



- | | | |
|------------------------|------------|---------------------|
| Albania | Germany | Nederland |
| Austria | Japan | Poland |
| Azerbaijan | Greece | Portugal |
| Belgium | Guatemala | United Kingdom |
| Belarus | India | Czech Republic |
| Bosnia and Herzegovina | Iran | Romania |
| Brazil | Ireland | Russia (Federation) |
| Bulgaria | Island | Serbia |
| Canada | Israel | Slovakia |
| China | Italy | Slovenia |
| Cyprus | Latvia | Spain |
| Colombia | Lebanon | Sweden |
| South Korea | Lihtuania | Swiss |
| Croatia | Luxembourg | Tunisia |
| Denmark | Macedonia | Turkey |
| Egypt | Malta | U.S.A. |
| United Arab Emirates | Moldova | Ukraine |
| Estonia | Montenegro | Hungary |
| Finland | Norway | |
| France | Oman | |

Registered trademarks:



- 1995 WINSIX®
- 1998 Free Tense System®
- 2001 Bioactive Covering®
- 2001 Free Lock®
- 2007 Full Contact Covering FCC®
- 2009 Flat Shift System®
- 2009 Micro Rough Surface MRS®
- 2010 Extreme Abutment®
- 2010 Teeth Just On 4®
- 2010 Teeth Just On 6®
- 2010 Torque Type®
- 2011 Clip Abutment Bar CAB®
- 2012 WINClinic®
- 2013 Double Conical Connection DCC®
- 2013 WINPeek® Abutment
- 2016 Extreme Abutment Multifunctional®
- 2016 Linea KAPPA®

- 2009 BioBone®
- 2009 Easy Surgery®
- 2015 Easy Weld®
- 2015 Easy Light®
- 2015 Easy Physio®
- 2017 BiAligner®

BIOSAFIN



GLOBAL QUALITY

BIOSAFIN is a registered company:

UNI EN ISO 9001:2015 which certifies the entire work process, confirming its conformity with the optimal quality requirements in order to safeguard product users – specialists and patients.

UNI CEI EN ISO 13485: 2016 which certifies Medical Device Quality.

BIOSAF IN srl
info@biosafn.com
biosafn.com

ITALY HEADQUARTERS:

MILAN: Via Cagliari32/44
20060 - TrezzanoRosa –
industrial area (MI)

Tel. +39 02 90968692

fax +39 02 90968541

ANCONA: Via Tiraboschi,36/G
60131 - Ancona (AN)

Tel. +39 071 2071897

fax +39 071 203261