

# EQ-V

Easy and convenient cordless obturator  
with innovative cartridge

## Your Choice for Warm Vertical Obturation!

The new EQ-V system by META BIOMED  
for the reliable, convenient and  
precise root canal obturation.  
Find out more inside!



Europe Version

 [www.facebook.com/Metabiomed.Endodontics](https://www.facebook.com/Metabiomed.Endodontics)

 [www.instagram.com/metabiomedinc](https://www.instagram.com/metabiomedinc)

 META  
BIOMED

# The EQ-V System – Easy and Quick System

## The difference is in the details



### Manual System

- Precise extrusion
- Easy maintenance



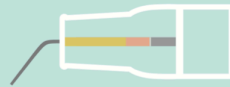
### Replaceable / Rechargeable Battery

- No separate tools needed
- Extra battery allows uninterrupted treatments



### Chemical Resistant

- Any disinfectants can be used
- No cracks!



### Refillable Cartridges

- Gutta percha fits directly inside the cartridge for clean delivery
- One click lock in



### 360° Ring Button

- Allows easy access to mandible and maxilla



### Safe Heating System

- Auto shut-off ensures patients' safety
- Saves battery life



**EQ-V Full Kit**

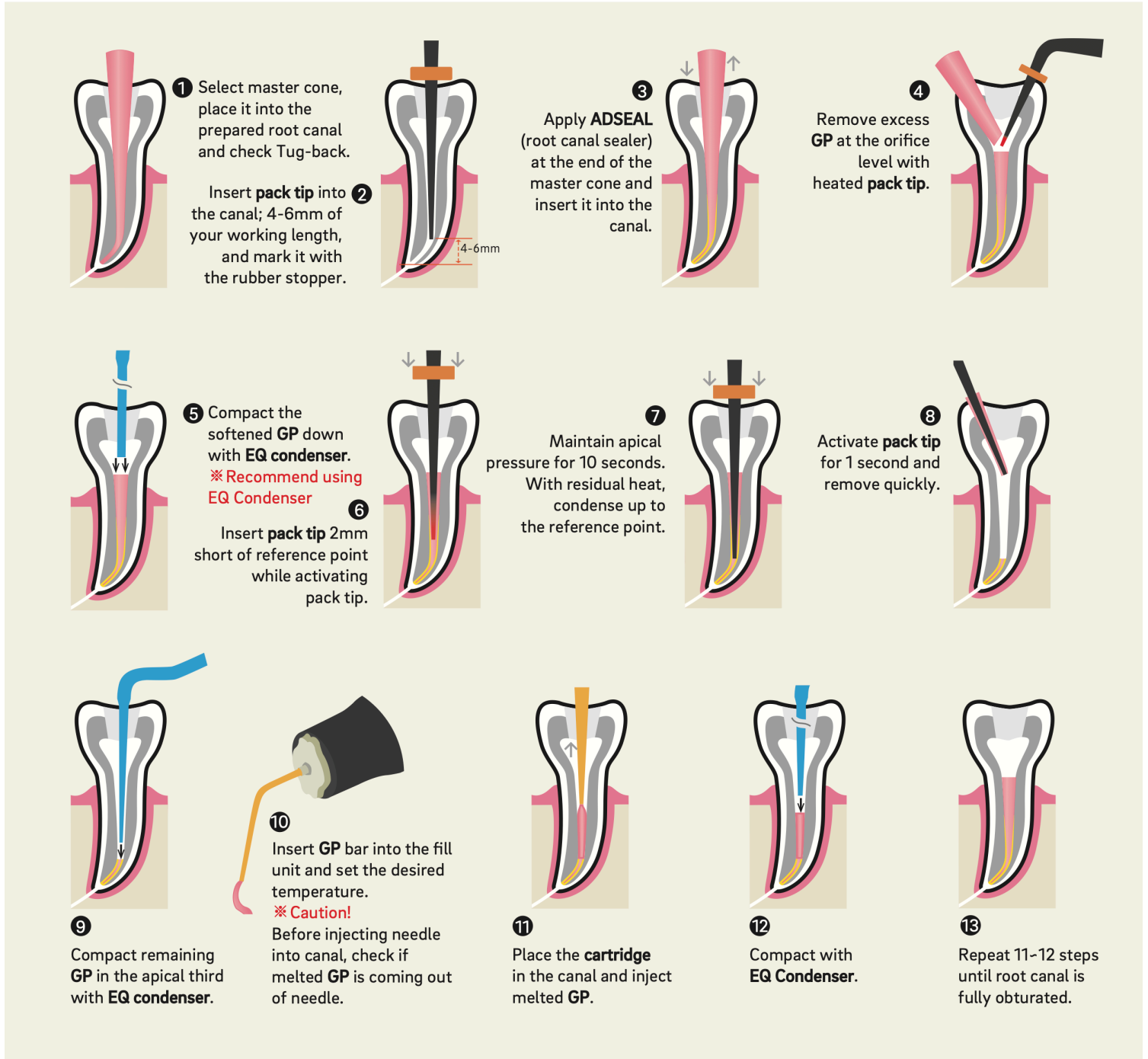


**EQ-V Fill**

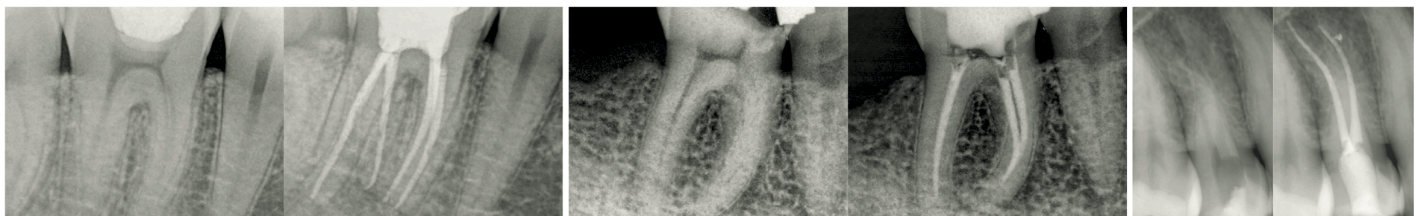


**EQ-V Pack**

# Obturation Sequence -



## Clinical Cases:



Before

After

Before

After

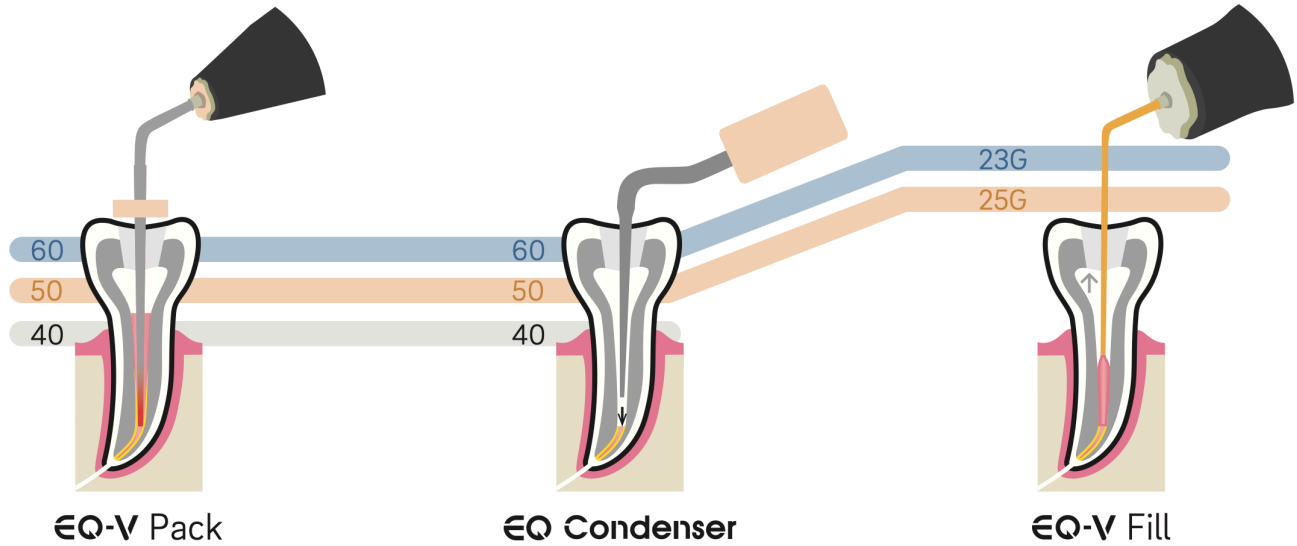
Before

After

Courtesy of  
Dr Jenner O. Argueta

Courtesy of  
Dr Álvaro Barrios Angulo

Courtesy of  
Dr Walter Vargas Obando



Contents \ Type	Fill Unit (Refill Type)	Pack Unit	Battery	Single Charger	Dual Charger	Packtip (50/.04, 60/.05) (2pcs/1pk)	Cartridge (25G) (6pcs/1pk)	Bending Tool	Cleaning Tool	AC Adapter	Power Cord	GP Bar (100pcs/Bottle)	Seal Driver	Plunger Seal (2ea/1pk)
Full Kit	0	0	0 (3pcs)		0	0	0	0	0	0	0	0	0	0
Fill Kit	0		0 (2pcs)	0			0	0	0	0	0	0	0	0
Pack Kit		0	0 (2pcs)	0		0				0	0			

R = Refillable

## Reference List for Orders

Item Code	Description	Item Code	Description
EQV026	FULL KIT	EQV-F35	Cartridge 23G (6pcs/1pk)
EQV027	FILL KIT	EQV-F36	Cartridge 25G (6pcs/1pk)
EQV022	PACK KIT	EQV-F32	Cartridge 23G & 25G (3pcs each/1pk)
EQV-C30	Battery	EQV-P21	Pack tip 40/.03 (1pcs/1pk)
EQV-F13	Plunger	EQV-P22	Pack tip 50/.04 (1pcs/1pk)
EQV-F24	Plunger Seal (2ea/1pk)	EQV-P23	Pack tip 60/.05 (1pcs/1pk)
EQV-S02	Cleaning & Tool Kit	EQV-F24	Pack tip 60/.05L (1pcs/1pk)
EQV-F25	Seal Driver	EQV-F25	Pack tip 50/.04, 60/.05 (2pcs/1pk)
EQV042	Gutta Percha Bar (100pcs/Bottle)	EQV-P26	Pack tip Assorted Set (4pcs/1pk)

## Specifications

<b>Charger</b>	Input	DC 9V,2A
	Output	DC 5V, 800mA
<b>EQ-V Fill</b>	Heater	DC 3.6V, 10W
	Heating Time	Within 35 seconds
<b>EQ-V Pack</b>	Heating Time	Within 1 second
<b>Operating Time</b>	Fill	Continuous for 1 hour
	Pack	Continuous for 1.5 hours
<b>Battery (Li-ion type)</b>	Li-ion	3.6V, 1900mAh
	Charging Time	2.5 hours

**Meta Biomed Co., Ltd - Head Office**  
 270 Osongsaengmyeong1-ro,  
 Osong-eup  
 Heungdeok-gu, Cheongju-si,  
 Chungbuk, Korea  
 Phone: +82 43 218 1981  
 info@meta-biomed.com  
 www.meta-biomed.com

**Meta Biomed Inc. - America**  
 3015 Advance Ln,  
 Colmar, PA 18915,  
 U.S.A  
 Phone: +1 267 282 5893  
 america@metabiomed-inc.com  
 www.metabiomedamericas.com

**Meta Biomed Europe GmbH - Europe**  
 Wiesenstraße 35  
 45473 Mülheim an der Ruhr,  
 Germany  
 Phone: +49 208 309 9190  
 europe@meta-europe.com  
 www.meta-europe.com