

# Ezfil

## Nano Hybrid Composite

Feel  
the way  
It fills

Ezfil can make your daily restorations easier.



 [www.facebook.com/Metabiomed.Endodontics](https://www.facebook.com/Metabiomed.Endodontics)

 [www.instagram.com/metabiomedinc](https://www.instagram.com/metabiomedinc)

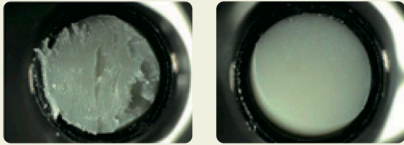
 META  
BIOMED

# It maintains strength and aesthetics

## Experience our new improved composite Ezfil

Nanoscale fillers of various sizes enhance both strength and naturalness of restoration. Our own optimized filler combination makes your treatment easier than ever. It works for both anterior and posterior teeth (Class I, II, III, IV, V)

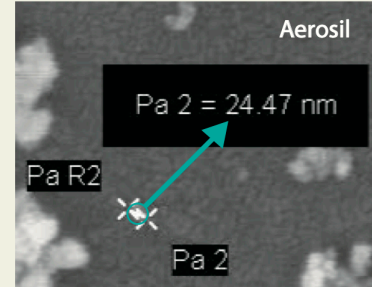
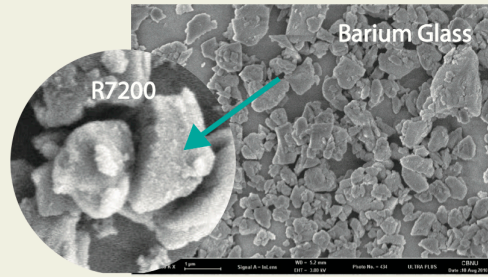
## Non-Sticky, Non-Slumping



<Competitor>

<Ezfil>

Ezfil has 74.36% of optimal filler content which makes it non-sticky and non-slumping and very easy to manipulate before placement.

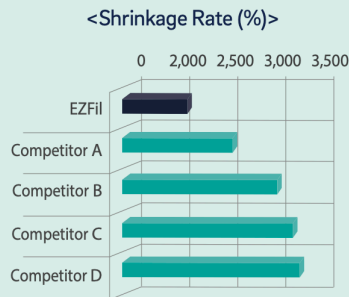


<SEM images of Fillers: B.G & Aerosil>

# Low Shrinkage

Low shrinkage is an important property to avoid Post-Op sensitivity.

Ezfil has 2% of shrinkage rate for superior marginal integrity



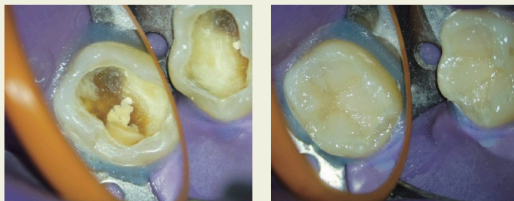
## Various Shades (Matches with VITA® Shades)

A1, A2, A3, A3.5, A4, B1, B2, B3, B4, C1, C2, C3, C4, D2, D3, D4, OP, TL

## Components

- Ezfil Kit
- 4g Syringe each of : A1, A2, A3, A3.5, B1, B2, OP
- Meta P&Bond 1bottle × 5g (with Microbrush 10EA)
- Meta Etchant 1syringe × 3g (with Disposable Tips 20EA)
- Ezfil Refill : 4g Syringe 1EA

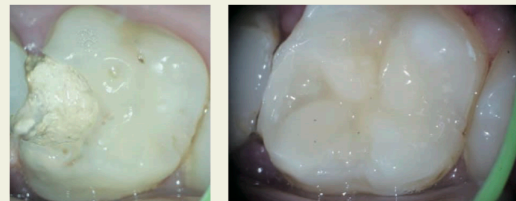
# Clinical Cases



Before

After (Class I )

Courtesy of Dr. Jenner O. Argueta (Guatemala)



Before

After (Class II)

Courtesy of Dr. Johnny Onori (Spain)

Meta Biomed Co., Ltd – Head Office  
270 Osongsaengmyeong1-ro, Osong-eup  
Heungdeok-gu, Cheongju-si,  
Chungbuk, Korea  
Phone: +82 43 216 0433  
dental@meta-biomed.com  
www.meta-biomed.com

Meta Biomed Inc.  
3015 Advance Lane  
Colmar, PA 18915,  
USA  
Phone: +1 267 282 5893  
america@metabiomed-inc.com  
www.metabiomedamericas.com

Meta Biomed Europe GmbH  
Wiesenstr. 35,  
45473 Mülheim an der Ruhr,  
Germany  
Phone: + 49 208 309 91910  
europe@meta-europe.com  
www.meta-europe.com