

Well-Root™ ST

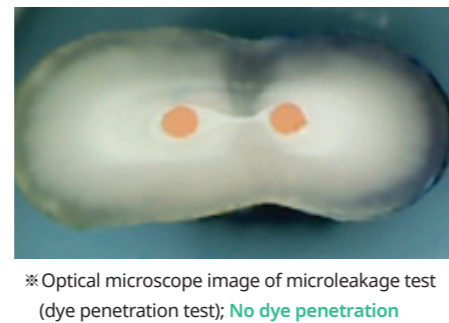
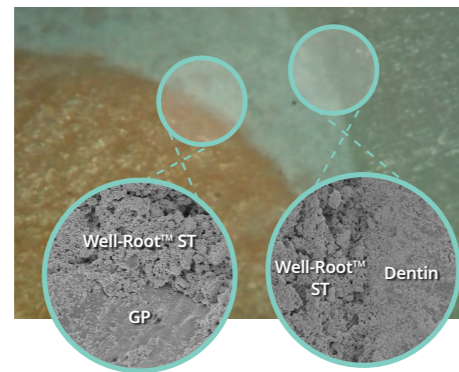
Premixed calcium aluminosilicate paste



Tight Sealing

- Excellent bonding to gutta-percha and dentin
- Zero shrinkage
- Hydroxyapatite generation
- Hydrophilic
- Extremely small particle size

▶ **Right Image**
 ※ Optical microscope and SEM image of GP/Well-Root™ ST/Dentin interface:
No gap at interface (GP/Well-Root™ ST and Dentin/Well-Root™ ST)



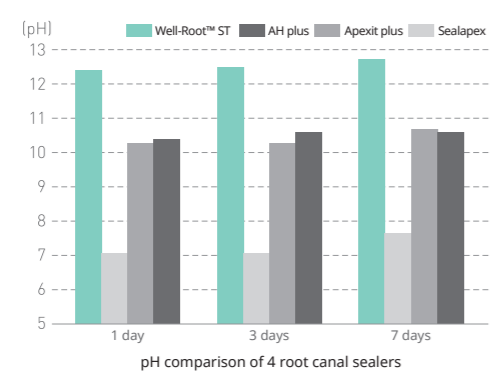
Easy to use

- No mixing, No working time
- Premixed injectable paste
- Optimal flowability

Biocompatible

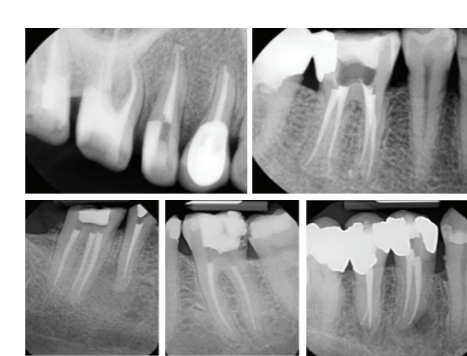
- High purity calcium aluminosilicates
- Resin-free
- Eugenol-free

High PH



- Calcium hydroxide is generated during setting
- pH value increase 12 and over
- Alkaline environment making it highly antibacterial

Radiopacity



- Well-Root™ ST uses zirconium oxide for radiopaque agent

Well-Root™ PT

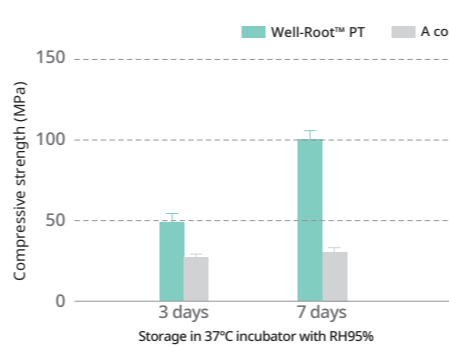
Premixed root canal filling material



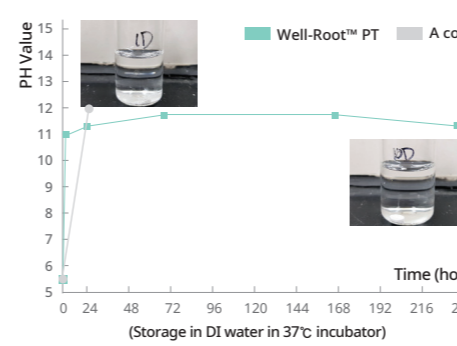
Features and Benefits

- Premixed putty without mixing process
- Paste-only filling
- Proper setting time for applications (Not too short / Not too long)
- Superior compressive strength
- Antibacterial effects by alkaline pH
- Biocompatible elements
- Radiopaque

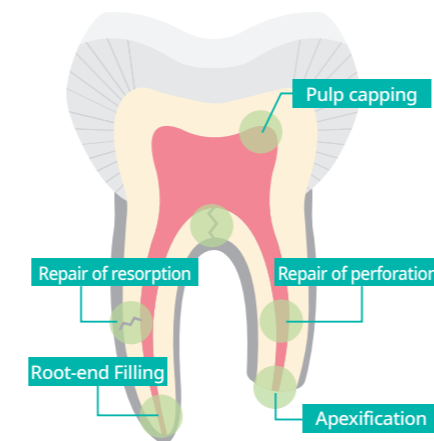
Compressive strength



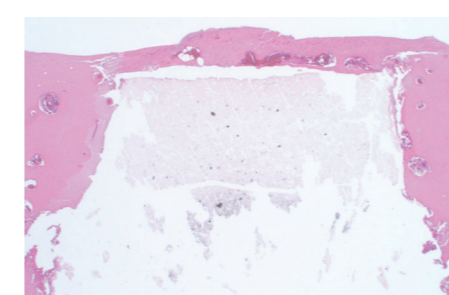
PH Change of Well-Root™ PT



Indications



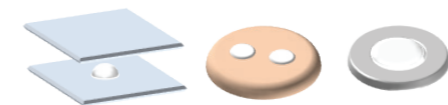
Biocompatibility



- Well-Root™ PT doesn't create inflammatory response.
- Well-Root™ PT seems to promote mineralization and show bioactivity.

Properties of Well-Root™ PT

Flow (mm)	Film thickness (μm)
10.25	38.8
Setting time (min.)	Radiopacity (mm)
Initial	8min
Final	50min
	5.4



Properties measured according to ISO 6876:2012

Well-Pex™

Oil-based Calcium Hydroxide Paste With Iodoform

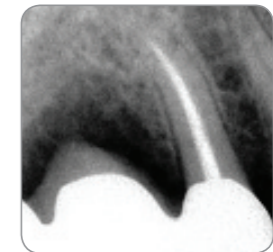


Features and benefits

- Well-Pex™ is a temporary root canal filling material for the infected root canal. It contains calcium hydroxide and Iodoform mainly, having good radiopacity and antibacterial characteristics.
- Well-Pex™ is very stable without any solidification or separation and a highly-flowable paste premixed in a convenient syringe. Also it has excellent accessibility to the apex and biocompatibility to the periapical tissue.

Indications

- Apexification
- Treatment for an infected root canal
- Temporary root canal filling
- Pulp capping of exposed pulp
- Disinfection after pulp extirpation treatment



▶ Radio-opacity

Well-Paste™

Water-based Calcium Hydroxide Paste With Barium Sulfate

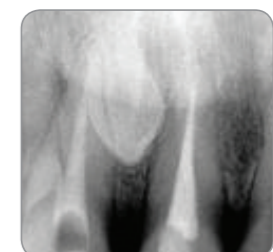


Features and benefits

- Well-Paste™ is a temporary root canal filling material for the infected root canal. It contains calcium hydroxide and barium sulfate mainly, having radiopacity and antibacterial characteristics.
- Well-Paste™ is very stable without any solidification or separation and a highly-flowable premixed paste in a convenient syringe. Also it has excellent accessibility to the apex and biocompatibility to the periapical tissue.

Indications

- Apexification
- Treatment for an infected root canal
- Temporary root canal filling
- Pulp capping of exposed pulp
- Disinfection after pulp extirpation treatment
- Pulp capping of vital pulpotomy



▶ Radio-opacity

Eazi-Endo™

Hand Rolled Endodontic Points



Gutta Percha Points

- Uniformly rolled from the finest Gutta Percha to extremely close tolerances
- Assurance in consistency of size and shape
- Guaranteed Brittleness & Radiopacity in accordance with ISO6877
- ISO/AE standard size : No. 10, 15, 20, 25, 30, 35, 40, 45, 50, 55, 60, 70, 80, 90, 100, 110, 120, 130, 140
- Non standard size (Conventional type) : X-Fine, Fine-Fine, Medium-Fine, Fine, Fine-Medium, Medium, Medium-Large, Large, X-Large
- Mini (Japanese) size : Fine-Small, Fine-Medium, Fine-Large, Small, Medium, Large
- De Trey size: XX-Fine, X-Fine, Fine, Medium
- ISO taper size: Taper 0.04 and Taper 0.06
- Endo Aide: 12 refillable compartments
- Indications : Fill a prepared root canal prior to tooth restoration

Absorbent Paper Points

- Uniformly rolled to extremely close tolerances
- Guaranteed consistency in size and shape
- Assures better absorbency and guarantees sterility prior to use. Sterilization Assurance Level: 10-6
- ISO/AE standard size : No. 10, 15, 20, 25, 30, 35, 40, 45, 50, 55, 60, 70, 80, 90, 100, 110, 120, 130, 140
- Non standard size (Accessory) : XX-Fine, X-Fine, Fine, Medium, Coarse, X-Coarse
- Endo Aide: 12 refillable compartments
- Indications : Remove moisture from the root canal or to introduce medicaments

Well-Prep™

Creamy EDTA Root Canal Cleaner



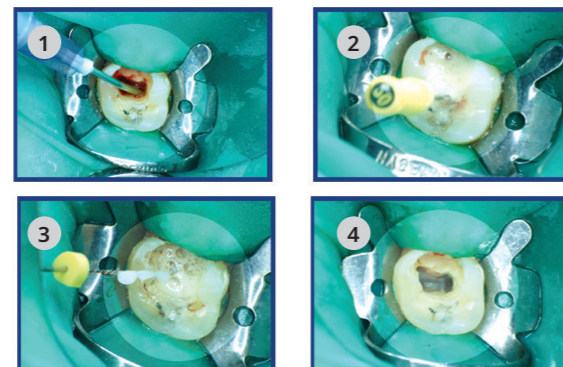
Features and benefits

- Well-prep™ containing ethylenediamine tetraacetic acid (EDTA) as a chelating agent allows efficient cleaning and easy preparation of root canal.
- Well-prep™ improves the efficiency in injection into root canals by a special lubricant.
- The pulp debris in the canal can be lifted out efficiently by the bubbling effect of urea-peroxide in Well-prep™.

Indications

- Facile shaping and cleansing of the root canal
- Easy and fast removal of debris
- Encouraging decalcification of dentin and antibacterial effect
- Simple handling of instruments in the canals due to lubricating effect

Procedure of treatment



1) Application by disposable tip ▶ 2) Application by file ▶
3) Removing debris ▶ 4) After cleaning



Endodontic Products Catalog

Sealing the Canal / Filling the Canal / Cleaning the Canal / Endodontic points

VERICOM CO., LTD.

Head Office / Factory
48, Toegyegongdan 1-gil, Chuncheon-si, Gangwon-do, Korea
Sales Office / R&D Center
15, Jeonpa-ro 62beon-gil, Manan-gu, Anyang-si, Gyeonggi-do 14086, Korea
Tel +82-31-441-2881 Fax +82-31-441-2883 Website www.vericom.co.kr
Email vericom@vericom.co.kr / overseas@vericomdental.com